

# IN-HOUSE



# PRODUCTION

Phone (702) 631-4748

# RIGGING CATALOG 2016

Catalog 3-16

[www.ihplabor.com](http://www.ihplabor.com)

6620 W. Arby Ave, Las Vegas, NV 89118

# ABOUT US AND OUR SERVICES

Founded in 2001, In-House Production (IHP) started as a Labor Provider providing qualified labor for Trade Shows, Industrials, Theatres, Conventions, Construction and Outdoor Events. Keeping with its roots as a labor provider, IHP has become a leading manufacturer, distributor, rigging and staging rental house, providing products and solutions in the Las Vegas area. Combined together, (our IHP Labor Service and IHP's Rigging & Staging Rental Solutions), we have all of your needs under one roof.



IHP carries some of the top named brands, such as: *Total Structures, Tomcat, Fiber-Tech Round Slings, Chicago Hardware, CM Rigging Products, AMC Fabrication Hardware, DBI-Sala and UltraSafe Fall Protection, CM and Chain Master Chain Hoists, Skjonberg, Applied Electronics, Show Distributions Motor Controls Grip Lock System, and The Light Source* (mega-couplers) to name a few. IHP believes in using Domestic rigging hardware products whenever available.

Within our shop, we are able to design, layout and build those special rigging and custom staging parts. We have the space to erect and test, before taking the projects to the job-site for final installation. Working with certified welders and structural engineers, we are able to make your vision a reality!

## SEE WHAT WE HAVE TO OFFER



6620 W. Arby Ave.  
Las Vegas, NV 89118  
(702) 631-4748 www.ihplabor.com

# INDEX

## Symbols

### A

Aircraft Cable Slings 27  
Aluminum  
  I-Beam 24  
  Trolley 24  
AMC Fabrication, Inc.. *See*  
  *also* Pulleys; *See also* Trol-  
  ley

### B

Base Plate Rack 15  
Base Weights 15, 16  
Beam Clamps. *See* Rigging  
Block Division, Inc.. *See* Pulleys

### C

Chain Hoist  
  Chain Master 21  
  Columbus McKinnon 21  
  Manual Chain Hoist 22  
  Ratchet Lever Hoist (Come-A-  
    Long) 22  
Chain Motor Control 37  
  Pendant 36  
Chairs  
  Chairs. *See* Staging, Chairs  
Cheeseboro 19  
Clamps 48, 50  
  Mega 26  
  Pro-Banner 48, 50. *See* Spe-  
    cialty Rigging  
  Pro-Pipe 48, 50. *See* Specialty  
    Rigging  
  Pro-Safety 48, 50. *See* Spe-  
    cialty Rigging  
  Pro-Screen 48, 50. *See* Spe-  
    cialty Rigging  
CMI Corporation. *See* Pulleys  
Custom Fabrication 51-52  
  Furniture Dolly, Dolly 41  
  Heavy Duty Stackable Stor-  
    age 51

### D

Display Systems  
  Pipe & Drape 46  
Dolly  
  Furniture Dolly 41  
  Heavy Duty Dolly 41

Stand Up Truss Dolly 41  
Truss Stacker and Dolly 41

### E

Electrical  
  Cable  
    Fly Cable 35  
  Cam-Lock Adapters 32  
  Power Distribution 33, 34

### F

Furniture Dolly 41  
Furniture Dolly, Dolly 41

### G

Griplock System 49

### H

**I**  
Imagineering 28, 52, 53, 54, 55

### J

### K

### L

### M

Music Stand 44

### N

Nutech Industries. *See* Power  
  Distribution

### O

OSHA Compliance Lift Train-  
  ing 29

### P

Pear-Forged Carbon Steel Rings.  
  *See* Rigging Hardware

Pipe Pecker 20  
Power Distribution 33  
Pulleys 31

### Q

### R

Rescue Systems, Inc.. *See* Pulleys  
Rigging  
  AirWall 26  
  Beam Clamps 25  
  Hardware 23  
  Pulleys 31  
  Slings  
    GAC Flex 30  
    Polyester Round Sling 30

### S

Sand Bags 44  
Scaffold  
  Leveling Jack 40  
Screw Pin Anchor Shackles.  
  *See* Rigging Hardware  
Skjoberg Controls, Inc.  
  *See* Chain Motor Control  
SMC Russ Anderson. *See* Pulleys  
Specialty Rigging 48, 50  
  Pro-Pipe 48, 50  
  Pro-Safety 48, 50  
  Pro-Screen 48, 50  
STAC Chain. *See* Rigging Hard-  
  ware  
Stagehand Labor Services 29  
Staging  
  Chairs 43  
  Click-Pipe 47  
  Dolly 41  
  Platforms 38  
    Casters 38  
    Kick Rail and Bracket 39  
    Legs 38  
  Railings 39  
  Skirting 39  
  Stairs 40  
Tools 45  
  Cross Grid Connector 45  
  Grid Pipe/Spreader Pipe 45  
  Pipe Clamp 45  
  Rope Lock 45

Steel  
  Pipe 19, 20

### T

TODD 17  
Trolley 24  
Truss  
  12" x 12" 5  
  Black Ladder Truss 5  
  Black Truss 5  
  Ground Support

Base Plates 15  
Illustration 16, 17, 18  
Tower 14  
Tower Head Block 6  
Tower Hinge 14  
Plated Aluminum 5  
Plated Aluminum Corner  
  Block 5  
Round Circle  
  Black 11  
  Silver 11  
Steel Articulating Hinge 7  
Steel Corner Block 7  
Steel Wedge 7  
Y-Truss 7  
20.5" x 20.5" Medium Duty  
  Aluminum Angled Corner  
    Block 9  
Pickup Bar 12  
Steel Pickup Bar 12  
Truss Hanger 13  
Pre-Rig 10  
  26" x 30" Plated  
    93" Long Section 10  
    Corner Block 10  
Specialty Items  
  20.5" x 20.5" Hinge 9  
  20.5" x 20.5" Spacer Block 9  
Grapple 13  
Steel Enclosed Concrete  
  Filled Base Plate Weights  
    16  
Truss Adapter 9  
Truss Sleeve Block 9  
V-Tower 4

### U

### V

V-Tower. *See* Truss, V-Tower

### W

Wardrobe Rack 43

### X

### Y

### Z

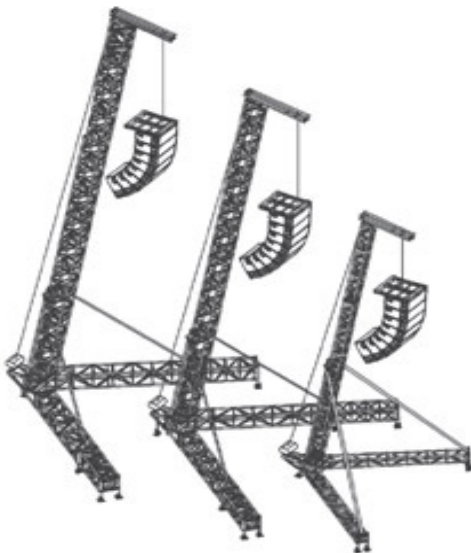
## SKY HOOK TOWER

### TOTAL STRUCTURES V-TOWER

When that special day arrives and you absolutely have to hang something; Speaker, Video Wall, Truss, or you name it, and the only thing to hang from is "AIR", what do you do - **call In-House Production.**



SKY-HOOK is **In-House Production's** solution for suspending your product anywhere and we mean anywhere: pools, parks, yards, convention space, lakes, rivers, race tracks, deserts, orchards, ball parks... **Anywhere!**



Total Structures Designed V-Tower (Sky-Hook) as a single point lifting device. Main design is to lift Audio Array Speakers, or any speaker cabinet, or a number of other lifting uses, to a height of 30'. Sky-Hook has 3 designed lifting points. Closest pick-point to the tower can lift **1,800lb.**, middle pick-point can lift **1,500lb.**, and the farthest pick-point out can lift **1,200 lb.** wind loads up to 35 mph (with standard set-up).

Complete Kits, for each 30' Tower are available on a 3 day or weekly basis. Ask about additional requirements for setup.

Please contact our IHP Specialist for pricing and availability.



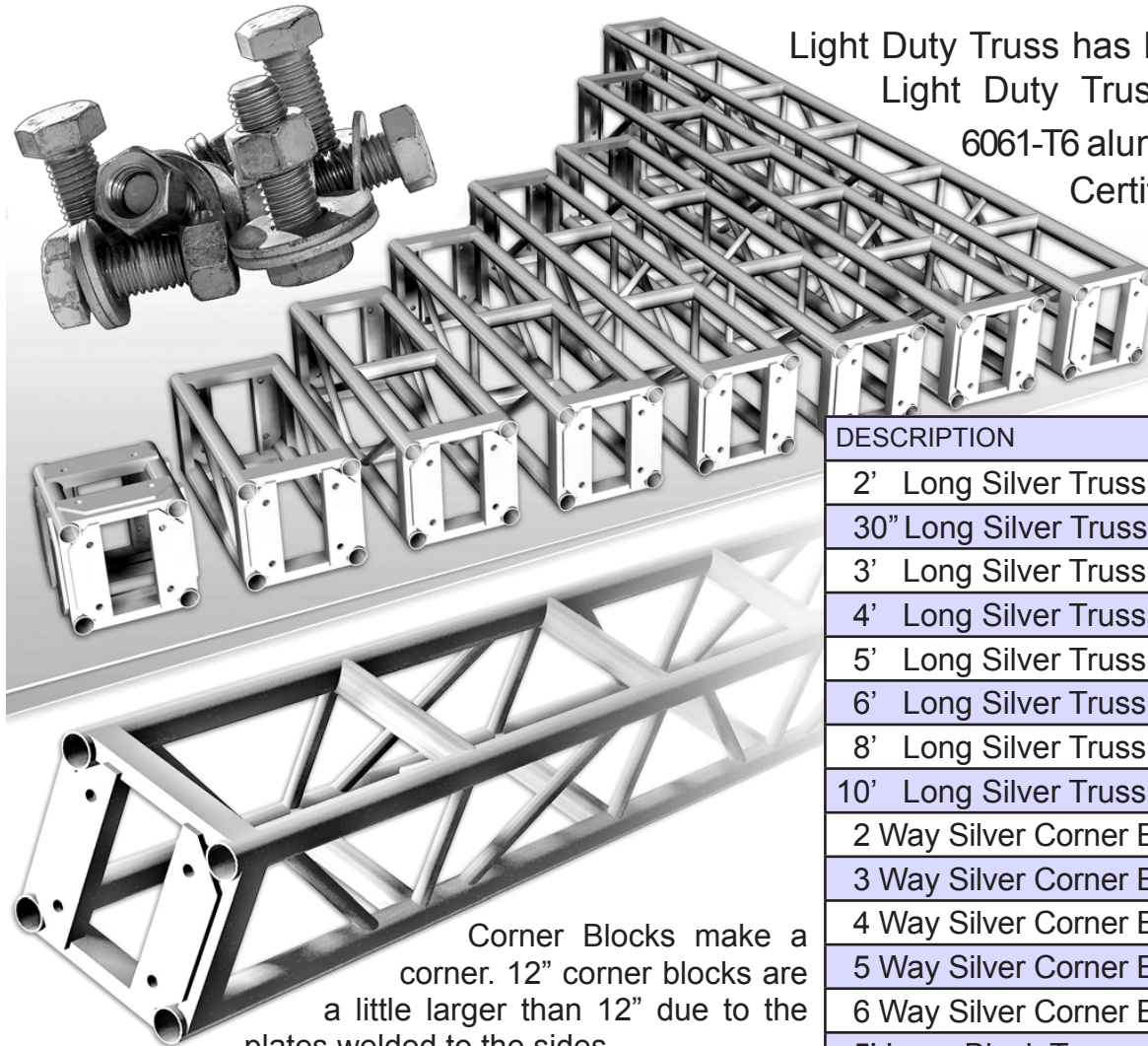


6620 W. Arby Ave.  
Las Vegas, NV 89118  
(702) 631-4748 www.ihplabor.com

# Truss

## 12"x12" Light Duty

Light Duty Truss has bolt connections.  
Light Duty Truss is made with  
6061-T6 aluminum. Maximum  
Certified span is 40'.  
Uniform Load  
at 40' is 933  
Pounds.



Corner Blocks make a  
corner. 12" corner blocks are  
a little larger than 12" due to the  
plates welded to the sides.

ALLOWABLE LOADS									
NOTE: THE MAXIMUM LOAD PER ONE SIDE OF THE TRUSS (SEE ELEVATION (A)) SHALL NOT EXCEED ONE-HALF OF THE TABULATED LOAD ON THIS TABLE									
SPAN ft (m)	MAXIMUM ALLOWABLE UNIFORM LOAD (w)			MAXIMUM ALLOWABLE POINT LOADS (P)					
	LOAD lbs/ft	LOAD lbs (kg)	MAX DEFL. in	LOAD lbs (kg)	MAX DEFL. in	LOAD lbs (kg)	MAX DEFL. in	LOAD lbs (kg)	MAX DEFL. in
10 (3.05)	472	4720 (2141)	0.69	2710 (1229)	0.68	1744 (791)	0.70	1110 (503)	0.73
20 (6.1)	115	2300 (1043)	0.70	1206 (547)	0.61	888 (403)	0.73	633 (287)	0.73
30 (9.14)	60	1800 (816)	1.66	880 (399)	1.35	600 (272)	1.53	428 (194)	1.59
40 (12.2)	31	1240 (562)	2.73	580 (263)	2.12	442 (200)	2.66	308 (140)	2.58

#### NOTES:

- 1) THE DESIGN OF THE ALUMINUM TRUSS ON THIS DRAWING IS BASED ON THE REQUIREMENTS OF THE CHAPTER 20 - ALUMINUM - CBC 2007.
- 2) FABRICATION AND ERECTION OF THE ALUMINUM TRUSS SHALL COMPLY WITH THE GUIDELINES OF THE SECTION 6 OF ALUMINUM DESIGN MANUAL 2005.
- 3) ALL MEMBERS SHALL BE ALUMINUM ALLOY 6061-T6 TEMPER.
- 4) THE FILLER ALLOY FOR WELDING SHALL BE IN COMPLIANCE WITH MIN 5554 WELDING RODS.
- 5) FOR THE LOAD CAPACITY OF THE TRUSS FOR 10', 20', 30' & 40' SPANS, SEE TABLE
- 6) ALL BOLTS WITH STANDARD WASHERS SHALL CONFORM TO SAE J429 GRADE 8.

DESCRIPTION	ITEM NO.
2' Long Silver Truss	R520001
30" Long Silver Truss	R520070
3' Long Silver Truss	R520010
4' Long Silver Truss	R520020
5' Long Silver Truss	R520030
6' Long Silver Truss	R520040
8' Long Silver Truss	R520050
10' Long Silver Truss	R520060
2 Way Silver Corner Block	R510000
3 Way Silver Corner Block	R510001
4 Way Silver Corner Block	R510010
5 Way Silver Corner Block	R510020
6 Way Silver Corner Block	R510030
5' Long Black Truss	R520030B
6' Long Black Truss	R520040B
8' Long Black Truss	R520050B
10' Long Black Truss	R520060B
4 Way Black Corner Block	R510020B
5' Long Black Ladder Truss	R520072B
10' Long Black Ladder Truss	R520073B



[ Industry-Compatible ]



[ 2" X 0.125" Main Tube ]

# Truss

## 12 x 12



6620 W. Arby Ave.  
Las Vegas, NV 89118  
(702) 631-4748 www.ihplabor.com

## HEAD BLOCKS

The Head Block bolts to the top of a vertical tower and allows the chain from the Chain Hoist to run over the top and down to the climbing truss. The block is 36" long with 2 grooved wheels.



Sky Hook Head Block has 3 positions, depending on the size of load to be picked up.



DESCRIPTION	ITEM NO.
Head Block for 12" x 12" Tower	R510400
Sky Hook Adjustable Head Block	R520200



6620 W. Arby Ave.  
Las Vegas, NV 89118  
(702) 631-4748 www.ihplabor.com

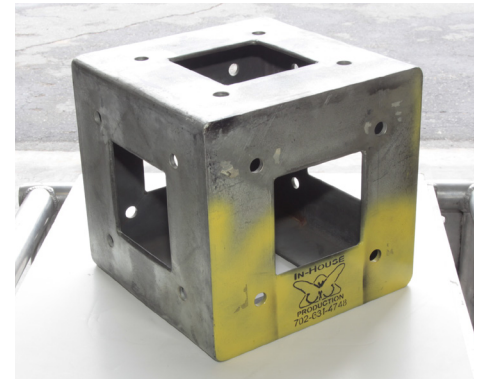
# Truss

## 12" x 12" Connections

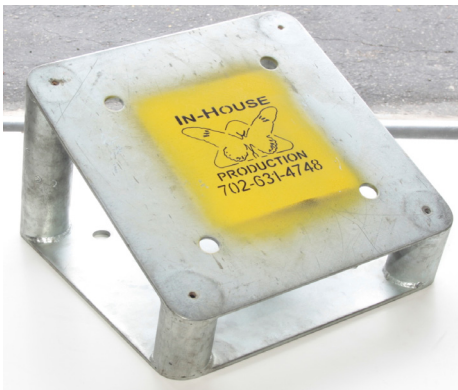
### 12" X 12" STEEL CORNER BLOCK

Our Steel Corner Blocks is designed to be exactly 12" x 12" with 6 sides to bolt 12" square or truss to.

DESCRIPTION	ITEM NO.
Steel Corner Block	R520315



### 12" X 12" STEEL WEDGE



12" x 12" Light Duty steel wedge is available in two different angles.

DESCRIPTION	ITEM NO.
45 Degree Wedge	R510080
22.5 Degree Wedge	R510081



### 12" X 12" STEEL ARTICULATING HINGE



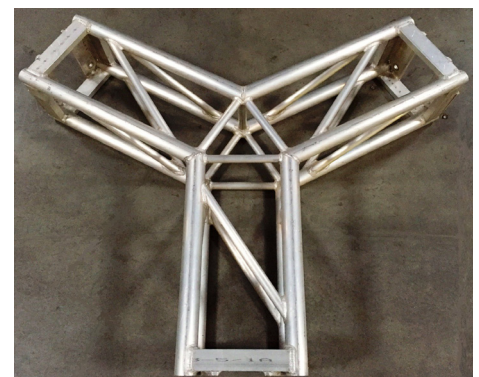
12" x 12" Light Duty Steel Hinge can be used to join 12" x 12" Truss at any angle between 90 degrees to 125 degrees.

DESCRIPTION	ITEM NO.
Steel Articulating Hinge	R520375

### 12" X 12" ALUMINUM "Y" TRUSS

12" x 12" Light Duty "Y" Truss is made with 6061-T6 aluminum. Each leg of the "Y" is 2 foot long, and uses bolt connections.

DESCRIPTION	ITEM NO.
"Y" Truss with 2 foot Legs	RTR12YSIL





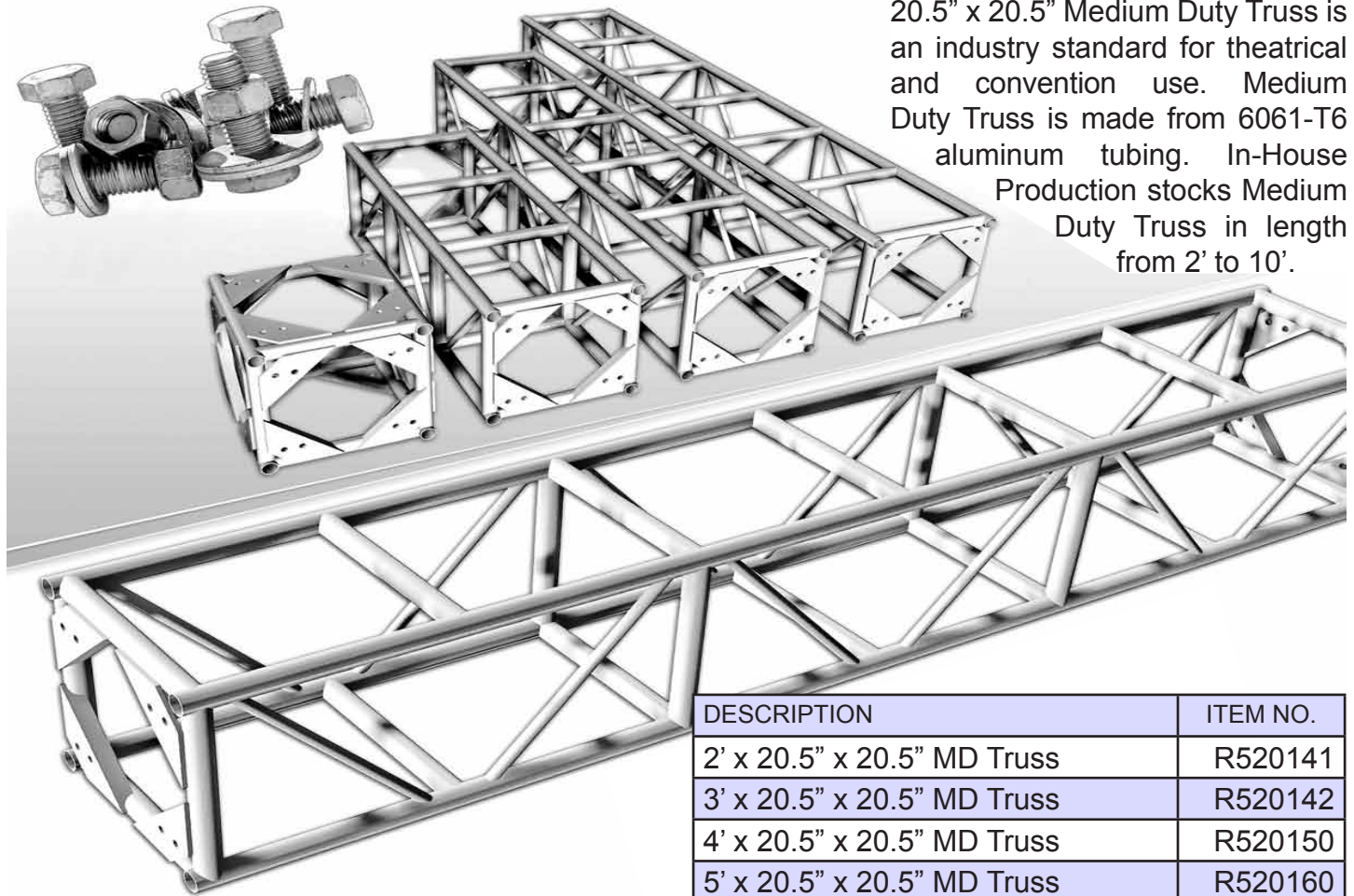
# Truss

## 20-1/2" X 20-1/2" Medium Duty



6620 W. Arby Ave.  
Las Vegas, NV 89118  
(702) 631-4748 www.ihplabor.com

20.5" x 20.5" Medium Duty Truss is an industry standard for theatrical and convention use. Medium Duty Truss is made from 6061-T6 aluminum tubing. In-House Production stocks Medium Duty Truss in length from 2' to 10'.



DESCRIPTION	ITEM NO.
2' x 20.5" x 20.5" MD Truss	R520141
3' x 20.5" x 20.5" MD Truss	R520142
4' x 20.5" x 20.5" MD Truss	R520150
5' x 20.5" x 20.5" MD Truss	R520160
6' x 20.5" x 20.5" MD Truss	R520161
8' x 20.5" x 20.5" MD Truss	R520170
10' x 20.5" x 20.5" MD Truss	R520180
4' x 20.5" x 20.5" MD Truss Black	R520160B
5' x 20.5" x 20.5" MD Truss Black	R520150B
8' x 20.5" x 20.5" MD Truss Black	R520170B
10' x 20.5" x 20.5" MD Truss Black	R520180B

<b>ALLOWABLE LOADS FOR TRUSSES BEING ERECTED AS SHOWN ON ELEVATION VIEW</b>									
<small>NOTE: 1) THE MAXIMUM LOAD PER ONE SIDE OF THE TRUSS (SEE ELEVATION (A)) SHALL NOT EXCEED ONE-HALF OF THE TABULATED LOAD ON THIS TABLE. 2) MAX POINT LOAD ATTACHED TO THE MEMBER (C) CAN NOT EXCEED 2100 LBS.</small>									
SPAN ft (m)	MAXIMUM ALLOWABLE UNIFORM LOAD (w)			MAXIMUM ALLOWABLE POINT LOADS (P)					
	LOAD lbs/ft	LOAD lbs (kg)	MAX DEFL. in.	LOAD lbs (kg)	MAX DEFL. in.	LOAD lbs (kg)	MAX DEFL. in.	LOAD lbs (kg)	MAX DEFL. in.
10 (3.05)	840	8400 (3810)	0.14	4745 (2152)	0.14	3450 (1565)	0.16	2270 (1030)	0.17
20 (6.1)	230	4600 (2087)	0.42	2306 (1046)	0.35	1729 (784)	0.43	1153 (523)	0.40
30 (9.14)	105	3150 (1429)	0.87	1510 (684)	0.72	1120 (508)	0.88	810 (367)	0.84
40 (12.2)	55	2200 (998)	1.52	1080 (490)	1.22	800 (363)	1.51	540 (245)	1.44
50 (15.2)	35	1750 (794)	2.49	820 (372)	1.96	580 (263)	2.29	420 (191)	2.37

- NOTES:**
- 1) THE DESIGN OF THE ALUMINUM TRUSS ON THIS DRAWING IS BASED ON THE REQUIREMENTS OF THE CHAPTER 20 - ALUMINUM - CBC 2007.
  - 2) FABRICATION AND ERECTION OF THE ALUMINUM TRUSS SHALL COMPLY WITH THE GUIDELINES OF THE SECTION 6 OF ALUMINUM DESIGN MANUAL 2005.
  - 3) ALL MEMBERS SHALL BE ALUMINUM ALLOY 6061-T6 TEMPER.
  - 4) THE FILLER ALLOY FOR WELDING SHALL BE IN COMPLIANCE WITH MIN 5554 WELDING RODS.
  - 5) FOR THE LOAD CAPACITY OF THE TRUSS FOR 10', 20', 30' & 40' SPANS, SEE TABLE (C).
  - 6) ALL BOLTS WITH STANDARD WASHERS SHALL CONFORM TO SAE J429 GRADE 8.

20.5" x 20.5" Medium Duty Corner Blocks allow designers to create corners using 2 way to 6 way blocks. Corners bolt to the end of the Truss with 5/8" Grade 8 bolts and nuts. Medium Duty Corner is made from 6061-T6 aluminum Tubing.

DESCRIPTION	ITEM NO.
2 Way Corner Block	R510040
3 Way Corner Block	R510041
4 Way Corner Block	R510050
5 Way Corner Block	R510060
6 Way Corner Block	R510061





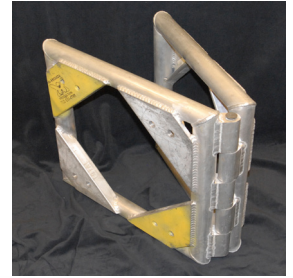
6620 W. Arby Ave.  
Las Vegas, NV 89118  
(702) 631-4748 www.ihplabor.com

# Truss Specialty Items

## 20.5" X 20.5" HINGE

Join two sections of 20.5" x 20.5" Aluminum Plated Truss at any desired angle.

DESCRIPTION	ITEM NO.
20.5" x 20.5" MD Hinge	R510071



## 20.5" X 20.5" SPACER BLOCK



Need just a little more length to get just that look you want or need?

DESCRIPTION	ITEM NO.
20.5" x 20.5" x 8" Spacer	R520181
20.5" x 20.5" x 4" Spacer	R520182

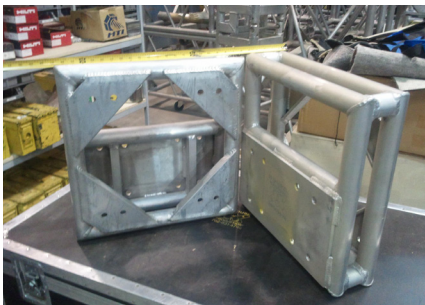


## TRUSS ADAPTER

This Truss adapter connects 12" x 12" Light Duty Truss to 20-1/2" x 20-1/2" Medium Duty Truss.

The adapter weighs 6lb.

DESCRIPTION	ITEM NO.
Truss Adapter	R510090



## ALUMINUM ANGLED CORNER BLOCK

The Medium Duty angled Corner Block is used to join sections of 20.5" x 20.5" Medium Duty Truss at a fixed 45 degree angle.

DESCRIPTION	ITEM NO.
45 Degree Angle MD Corner	R510082



12" x 12" Tower Truss slides inside medium Duty truss.

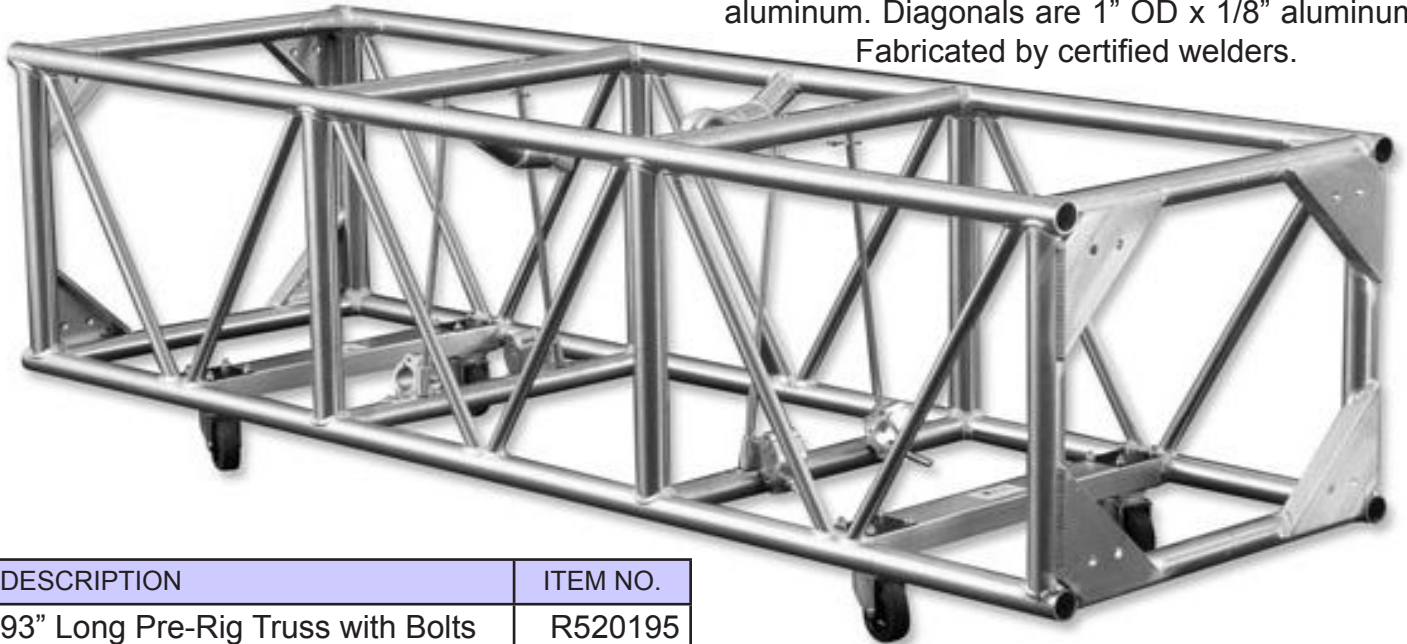
## TRUSS SLEEVE BLOCK

The Medium Duty Truss Sleeve Block guides the attached Medium Duty Truss as it is raised in a Ground Support System. Ground Support System uses 12" x 12" Towers. A Sleeve Block can also serve as a 4 way Corner Block.

DESCRIPTION	ITEM NO.
MD Sleeve Block	R510140

## DOUBLE HUNG PRE-RIG TRUSS 26" X 30" PLATED

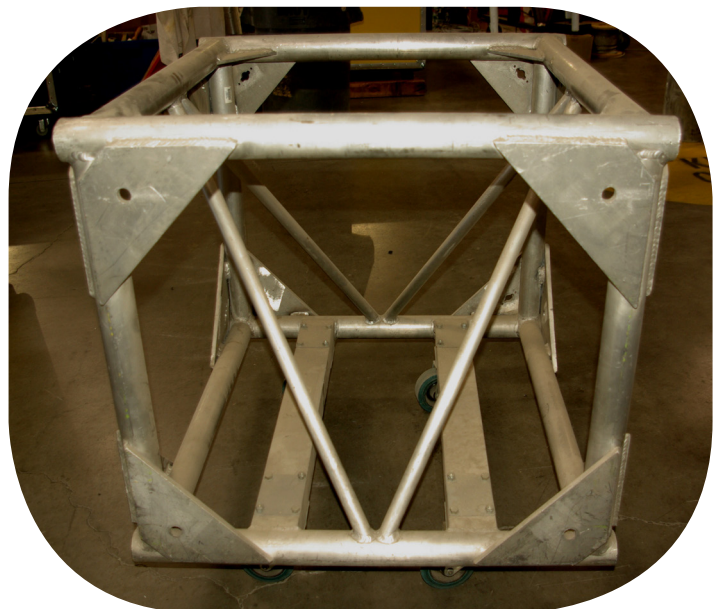
Standard length is 93". Main cords are 2" OD x 1/8" aluminum. Diagonals are 1" OD x 1/8" aluminum. Fabricated by certified welders.



DESCRIPTION	ITEM NO.
93" Long Pre-Rig Truss with Bolts	R520195

## DOUBLE HUNG PRE-RIG TRUSS 26" X 30" PLATED CORNER BLOCK

Bolts to Double Hung Pre-Rig Truss. Main cords are 2" OD x 1/8" aluminum. Diagonals are 1" OD x 1/8" aluminum. Fabricated by certified welders.



DESCRIPTION	ITEM NO.
Pre-Rig 26" x 30" Corner Block	R520196

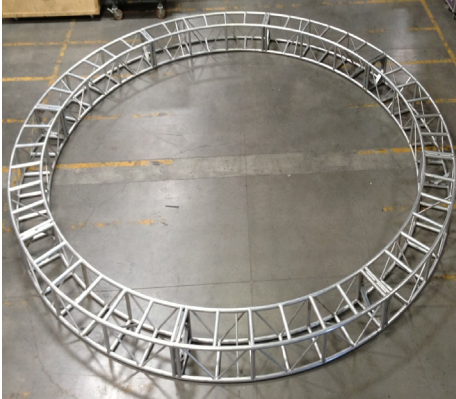


6620 W. Arby Ave.  
Las Vegas, NV 89118  
(702) 631-4748 www.ihplabor.com

# Truss Specialty Items

## SILVER CIRCLE TRUSS

### 12" X 12" CIRCLES



PLATED 12" X 12" Aluminum Circle Truss. Four evenly sized pieces make the full circle.

You can rent parts or pieces of the circle truss for that Special Arch or Stretched Arch. Just add different lengths of straight truss to create the look you need. This can be done with the 12" silver truss. Add wheels and you have a rolling Arch for that special entrance.

**What would your design be?**

DESCRIPTION	ITEM NO.
12" x 12" Outside Diameter 10', Plated Conn.	R520243
12" x 12" Outside Diameter 22', Plated Conn.	R520244

## BLACK CIRCLE TRUSS

We have 3 complete Black Circle Truss units. Our two smaller ones are 12" X 12" with 10' and 20' outside diameter. These two are spigoted connections. Our larger diameter circle (26'), is a 12" triangle with plated connections.

All hardware supplied to connect sections together.

### 12" X 12" AND 12" TRIANGLE CIRCLES

DESCRIPTION	ITEM NO.
Outside Diameter 10', 4 Sections, Black, Spigot Conn.	R520240B
Outside Diameter 20', 8 Sections, Black, Spigot Conn.	R520242B
Outside Diameter 26', 8 Sections, Black Triangle Truss	R520246B





# Truss

## Specialty Items



6620 W. Arby Ave.  
Las Vegas, NV 89118  
(702) 631-4748 www.ihplabor.com

## PICK UP BAR

Pick-Up Bar for 20.5" x 20.5" truss, with multiple shackle holes simplifies leveling the Truss when the loading is uneven.

DESCRIPTION	ITEM NO.
Tomcat Pick-up Bar	R510380



## TRUSS STEEL PICK-UP BAR

The Steel Pick-Up Bar allows the chain hoist to connect within when lifting medium duty 20-1/2" x 20-1/2" truss. It is built from steel and a 1" bolt with two cheeseboro clamps for aluminum truss.

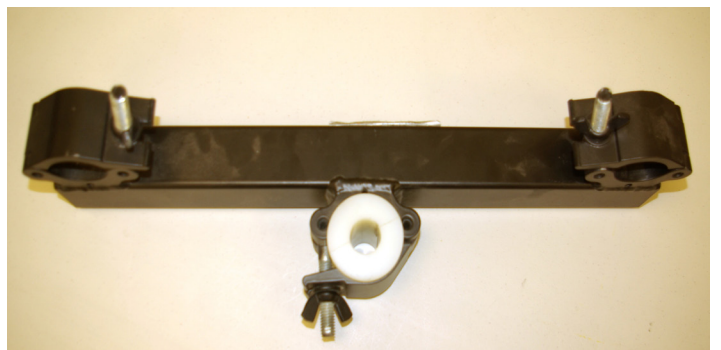
DESCRIPTION	ITEM NO.
20.5" Steel Pick-Up Bar	R510390



## MEDIUM DUTY CHAIN GUIDE

Chain Guide for 20.5" x 20.5" Truss.  
Used to keep the chain in the center of the truss when lifting from the bottom cords. White bushing protects chain from wear.

DESCRIPTION	ITEM NO.
MD Chain Guide	R510385







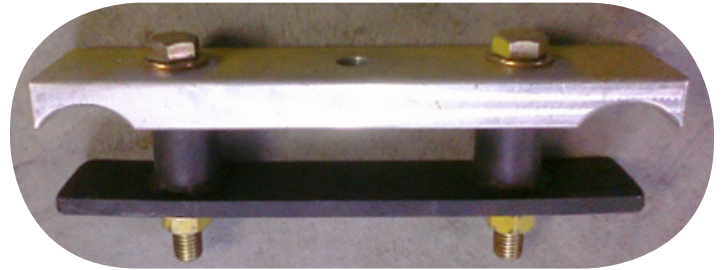
6620 W. Arby Ave.  
Las Vegas, NV 89118  
(702) 631-4748 www.ihplabor.com

# Truss Specialty Items

## TRUSS GRAPPLE

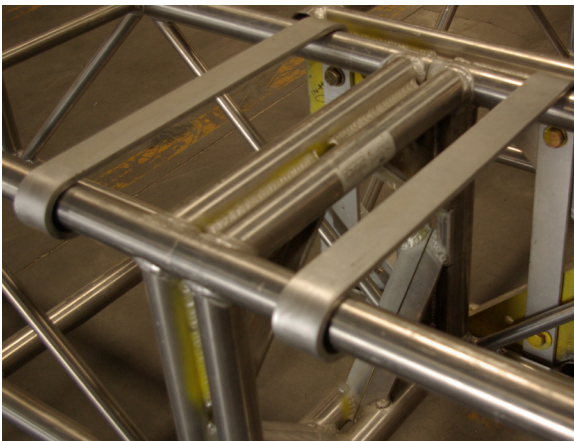
The Grapple allows you to make in-line 90 degree connections between similar trusses anywhere along a perpendicular primary truss. The load capacity of the in-line truss will carry 75 percent of the manufacturer's load rating. The primary truss must have point load calculations taken into consideration when using.

***Cantilevering of Truss  
Is Not Recommended.***



DESCRIPTION	ITEM NO.
Pair of 20.5" Grapple	R510350
Pair of 30" Grapple	R510351
Pair of 12" Aluminum Grapple	R510352
Pair of 12" Steel Grapple	R510353

## TRUSS HANGER



Steel Truss Hangers are designed to be used instead of plated corner blocks or replace the use of truss grapples. Steel Truss Hangers lay on the top cord of truss and hang over the edge, not having to dodge diagonal tube, as with grapples. Steel Truss Hangers are rated at 100 percent of the truss you are hanging from. Also, no spacers are required when hanging inside truss anywhere.

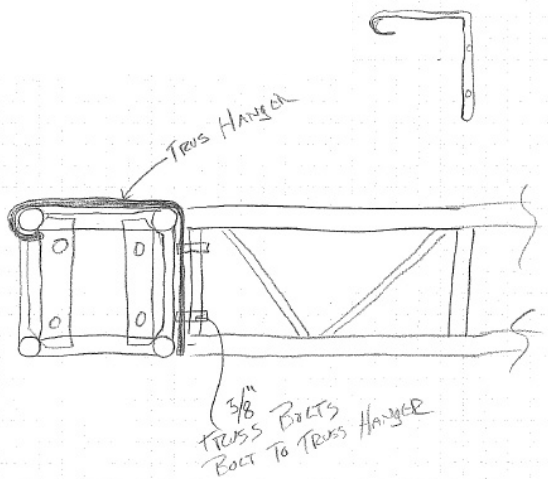
← Shown on the left is an example of a hanger connection.



DESCRIPTION	ITEM NO.
Truss Hanger 20.5" (Shown)	R510393
Truss Hanger 12"	R510394

### Truss Hanger Installation

1. Hook Truss Hanger on truss and lay over.
2. Bolt new truss to Truss Hanger.
3. 2 Truss Hangers attach to end of truss.
4.  $\frac{5}{8}$ " truss bolts used to bolt Truss Hanger to end of truss.
5. Load rating is 100% of the truss it's hanging from.



# Truss

## 12 x 12 Ground Support



6620 W. Arby Ave.  
Las Vegas, NV 89118  
(702) 631-4748 www.ihplabor.com

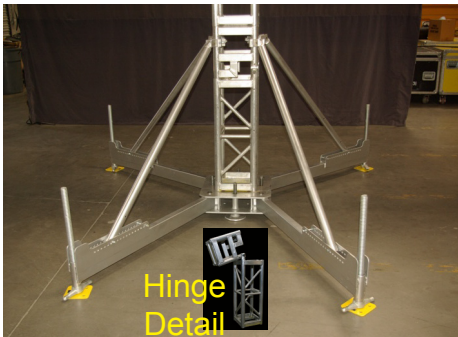


### 12" X 12" TOWER

Tower Truss is designed for compression load. It is built with thicker tubing and diagonals on 3 sides to prevent twisting from the downward force.

DESCRIPTION	ITEM NO.
2' x 12" x 12" Tower LD	R520079
30" x 12" x 12" Tower LD	R520140
3' x 12" x 12" Tower LD	R520080
4' x 12" x 12" Tower LD	R520090
5' x 12" x 12" Tower LD	R520100
6' x 12" x 12" Tower LD	R520110
8' x 12" x 12" Tower LD	R520120
10' x 12" x 12" Tower LD	R520130

### 12" X 12" TOWER HINGE AND OUTRIGGERS



For a Ground Support System, the Tower Outriggers extend the base for stability. Illustrated to the left, consists of an Adjustable Base Plate, 4 Outriggers, 4 Diagonal Braces from Outrigger to Truss, and 4 Scaffold Leveling Jacks.

DESCRIPTION	ITEM NO.
12" x 12" Tower Leveler (X) Base Plate	R510151
Outrigger Support Bar Straight	R510153
Diagonal Brace	R510155
IHP Custom Truss Outrigger Bracket	R510157
Scaffold Leveling Jack	R250010

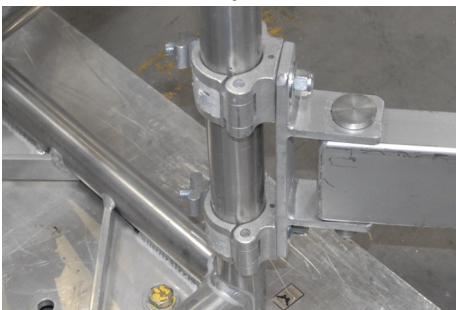
### OUTRIGGERS

Add Outriggers to any size truss, anywhere, anyplace, with IHP Custom Truss Outrigger Bracket.

Even a single pipe can be made to stand vertically with the use of our outriggers.

With our combination of parts, and your Imagination, we can we build it for You!

Close up Detail



Close up



Complete View



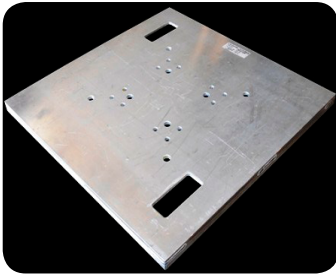




6620 W. Arby Ave.  
Las Vegas, NV 89118  
(702) 631-4748 www.ihplabor.com

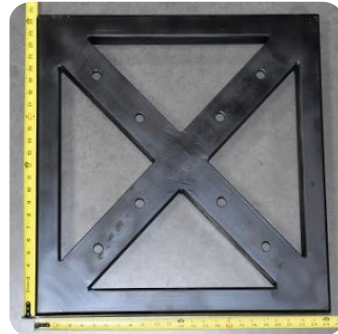
# Truss Ground Support

## BASE PLATES



Aluminum Base Plate ↖

1/2" x 30" x 30" Aluminum Plate is welded to  
1" x 2" Rectangle Aluminum Tubing.  
Fits both 12" x 12" and 20.5" x 20.5" truss.  
Total Weight 51 lb.



Steel Base Plate →

Steel Base Plate is 24", 36", and 42" square and  
is constructed from 2" x 2" x 1/4" wall tubing and  
2" x 2" x 1/4" angle.  
Fits both 12" x 12" and 20.5" x 20.5" Truss.  
Total Weight of 24" x 24" is 55 lb.  
Total Weight of 36" x 36" is 62 lb.  
Total Weight of 42" x 42" is 67.5 lb.

Base Plate Racks →



Custom Racks hold 10  
Base Plates. They are  
STACKABLE, able to  
add CASTERS to roll,  
or use a FORKLIFT,  
or PALLET JACK.

DESCRIPTION	ITEM NO.
Aluminum Base Plate	R510100
Steel Base Plate 24" x 24"	R510108
Steel Base Plate 36" x 36"	R510105
Steel Base Plate 42" x 42"	R510110
12" x 12" Tower Leveler (R-A) Base Plate	R510156
12" x 12" Tower Leveler (R-S) Base Plate	R510151

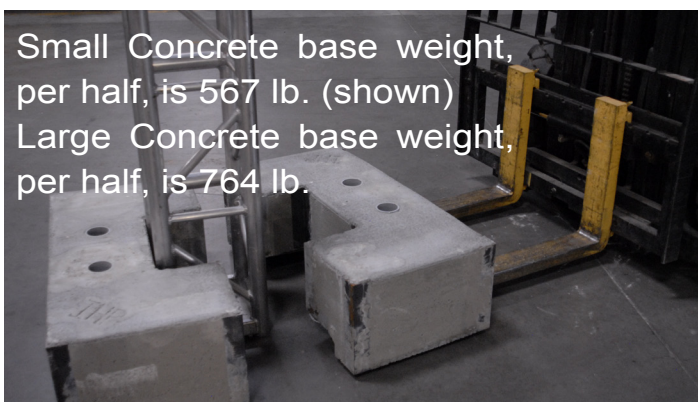
(R-A) Round Aluminum, (R-S) Round Steel

### Leveler Base Plate

Leveling Base adjust  
for uneven floor and fits  
12" x 12" Tower Truss.  
Total Weight:  
Steel 150 lb.



## BASE WEIGHTS



Small Concrete base weight,  
per half, is 567 lb. (shown)  
Large Concrete base weight,  
per half, is 764 lb.

When additional stability is required, we have 2  
sizes of base weights that fit around the truss and  
sit on our steel base plates.

DESCRIPTION	ITEM NO.
Small Concrete Base Weight 567 lb.	R999004
Large Concrete Base Weight 764 lb.	R999005

# Truss

## Ground Support Base Weight



6620 W. Arby Ave.  
Las Vegas, NV 89118  
(702) 631-4748 www.ihplabor.com

## STEEL ENCLOSED CONCRETE FILLED BASE PLATE WEIGHTS

When greater truss stability is required, IHP has a new Base Plate to meet your needs.

We make a Black Painted Steel Enclosed, Concrete Filled, 36" x 36" x 12" Base Plate, that weigh in at 1,250 lbs.

- Steel Center Top is  $\frac{3}{8}$ " Steel Plate made for bolting both 12" and 20.5" Plated Truss.
- $\frac{5}{8}$ " Grade 8 Nuts are Part of the  $\frac{3}{8}$ " Steel Bolt Plate.
- Center Hole in the Steel Center Top accepts 1- $\frac{1}{4}$ " Acme Thread.
- Removable 10,000 lbs. Rated Load, Swivel 360°, Pivot 180°, Forged Steel Lifting Ring that can be used for Tie-Downs or other means
- Schedule 40 Round Pipe on all 4 corners to accept Scaffold Screw Jacks.
- Recessed Bottom Corners in Base Plate for "0" starting point while leveling.
- Center Fork Lift Pocket opening for easy moving and stacking.
- Can be Stacked and Bolted together. Maximum of 10.

12" Truss

20.5" Truss



Single Weight

10,000 lbs Rated Load Swivel



Multiple Weights



Leveling Jacks

**Available for Sale**



1,250 lbs - 2,500 lbs - 3,750 lbs  
Weight - 2 Stack - 3 Stack



Leveling Jacks  
Stage Deck Platforms & Steps



Leveling Jacks      2 Stack  
Indoor or Outside Use





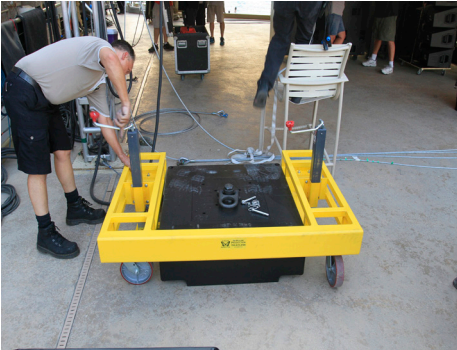
6620 W. Arby Ave.  
Las Vegas, NV 89118  
(702) 631-4748 www.ihplabor.com

# Truss

## Base Weight Dolly

**PROBLEM:** How do you move a 1,250 Pound Base Weight without a Forklift?  
**SOLUTION:** Call for "TODD"

## "TODD-1250"



TODD-1250-3



TODD-1250-3 and 4

- Our NEW BASE WEIGHT DOLLIES
- We have designed and built "TODD"
- Easily move around our 1,250 pound, Steel Enclosed Concrete Filled Base Plate Weights.
- "TODD" 1250-3 is 3 sided for use when tower is bolted to the base weight plate.
- "TODD" 1250-4 is a 4 sided dolly
- You can move base plate weights around town with a truck having a lift gate.
- Roll them on your truck using the lift gate.
- Roll them off the truck using the lift gate.
- Roll them anywhere.
- Dolly's have hand cranks to raise base plate weight off the floor.
- Bolt truss to the base weights for lighting or audio towers in ballrooms, pools, convention spaces.
- No need for sandbags.
- No need for a forklift.

DESCRIPTION	ITEM NO.
"TODD" 1250-3 is a 3 sided Base Plate Weight Dolly	
"TODD" 1250-4 is a 4 sided Base Plate Weight Dolly	



TODD-3 and 4



TODD-1250-4

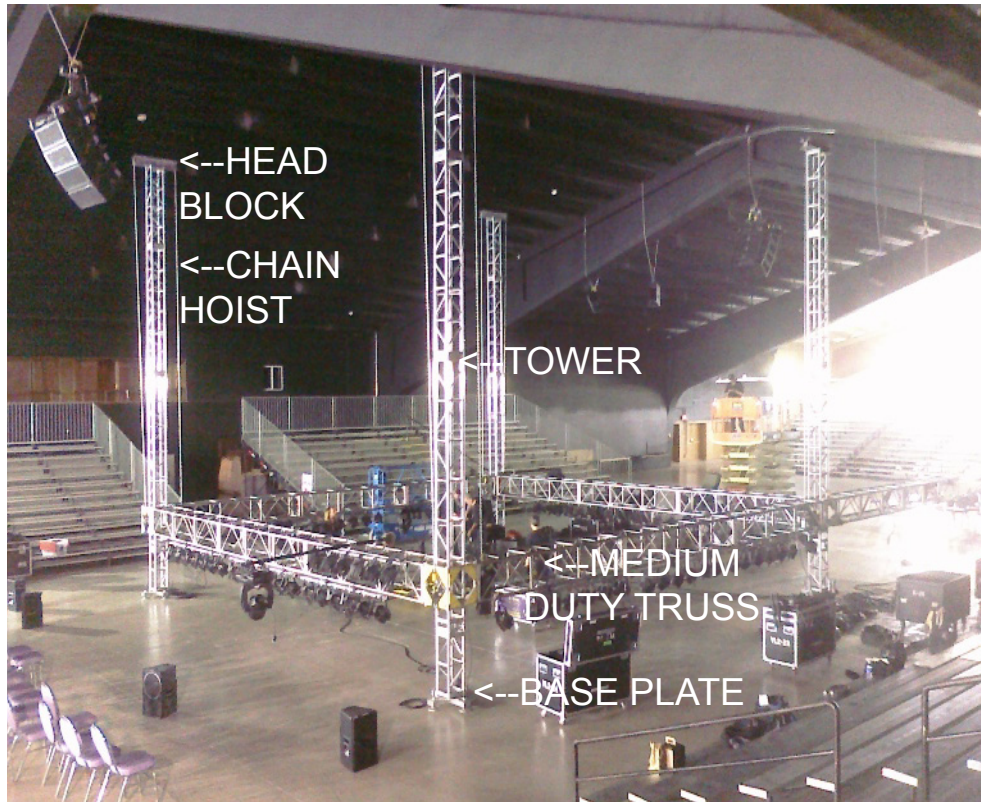
Available for  
Sale

# Truss

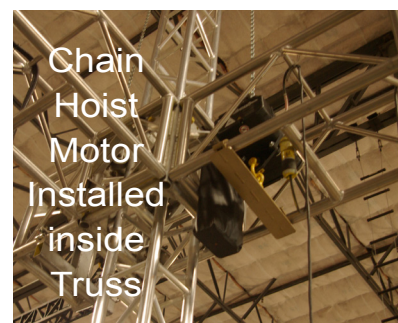
## 12x12 Ground Support



6620 W. Arby Ave.  
Las Vegas, NV 89118  
(702) 631-4748 www.ihplabor.com



This is an example of a Ground Support System, which can be used inside or outside. This design is used where there is no structure to hang from. In this photo the Ground Support was used for lighting around a boxing ring. Starting from the bottom: 4 adjustable base plates with outriggers (added after picture when truss is higher than hinge), 4 - 12" x 12" tower truss (can be heights from 20' to 34'), 4 - 20.5" sleeve blocks that go around the 12" tower truss (hoist and 20.5" truss attach to sleeve block), 20.5" x 20.5" medium duty truss (can go up to 45' x 45' inside square), 4 - chain hoists to lift sleeve block up or down tower truss, 4 - head blocks (used to run chain from chain hoist over top of truss tower). The chain hoists work together and climb up the tower truss.



One can hang lighting, video, audio, props, drapes or sets from Ground Support. This is one design of what can be done with the Ground Support System.





6620 W. Arby Ave.  
Las Vegas, NV 89118  
(702) 631-4748 www.ihplabor.com

# Truss

## Specialty Items

### CHEESEBORO

Known as Cheeseboro, it is alternately referred to as cheesborough, cheese-burger, burgers, scaffold clamp, or pipe-clamps. It is a device for connecting 2 pipes or tubing together for added hanging points. Comes in three styles: Single with (bolt or eye nut), Rigid (fixed at straight or 90°), and Swivel. Cheeseboros are made from two materials, forged steel and machined aluminum. The steel and aluminum cheeseboros fit 1.25", 1.5", and 2" O.D. round pipe, aluminum and tubing.

Aluminum Pipe-Clamps available in black.

Working load limit aluminum - 750 lb.

Working load limit steel - 1,100 lb.



DESCRIPTION	ITEM NO.
Swivel Clamp	R510190
Single Clamp	R510191
90 Degree Fixed Coupler	R510192



### PIPE

Round Galvanized Pipe, Black Pipe, Aluminum Pipe, round and square tubing available for rent or sale. Pipes come with or without threaded ends. Sizes run from 1" to 2" pipe or tubing with larger or smaller sizes available upon request. Lengths run from 3' to 21'. 1" mechanical tubing available from 1' to 10' in length.

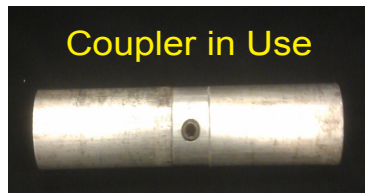
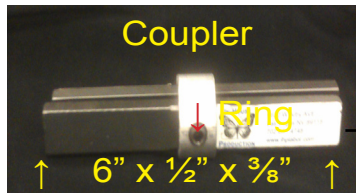
Listed below is the Black Steel. Also available in aluminum tubing.

DESCRIPTION	ITEM NO.
21' Long 1-1/2" #40 Pipe Steel/Black	R350001
20' Long 1-1/2" #40 Pipe Steel/Black	R350002
15' Long 1-1/2" #40 Pipe Steel/Black	R350003
12' Long 1-1/2" #40 Pipe Steel/Black	R350004
10' Long 1-1/2" #40 Pipe Steel/Black	R350005
8' Long 1-1/2" #40 Pipe Steel/Black	R350006
6' Long 1-1/2" #40 Pipe Steel/Black	R350007
5' Long 1-1/2" #40 Pipe Steel/Black	R350008
4' Long 1-1/2" #40 Pipe Steel/Black	R350009
3' Long 1-1/2" #40 Pipe Steel/Black	R350010

# PIPE PECKER

## INTERNAL PIPE COUPLER

Provides a secure, smooth joint when connecting 2 pipes together. Can be Steel or Aluminum, Pipe or Tubing. Couplers are made for 1- $\frac{1}{4}$ ", 1- $\frac{1}{2}$ " Pipe or 2" Tubing. Perfect for long banners or hand rails. Can be used to add a header curtain to a truss to mask truss spot and/or rigging hardware for a finished theatrical look.



Quickly joins two pipes together without drilling or threading for permanent or temporary installations. The coupler is the same diameter as the pipe for a flush appearance. We can provide additional ring sizes to match your needs. Install by loosening the set screw with a  $\frac{1}{4}$ " Hex Key to open the splice. Insert the coupler completely into both pipes and tighten the set screw.



These examples show the Pipe Pecker with truss corner blocks and a header pipe that could mask the top of the truss or be used to hang a show teaser or banner above your stage.

DESCRIPTION	ITEM NO.
6" Long Coupler	R350060
8" Long Coupler	R350061
1- $\frac{1}{2}$ A Pipe Corner 2 Way	R357080
1- $\frac{1}{2}$ A Pipe Corner 3 Way	R357081
1- $\frac{1}{2}$ S Pipe Corner 2 Way	R350070
1- $\frac{1}{2}$ S Pipe Corner 3 Way	R350071
1- $\frac{1}{2}$ S Pipe Corner 4 Way	R350072
1- $\frac{1}{2}$ S Pipe Corner 5 Way	R350073
1- $\frac{1}{2}$ S Pipe Corner 6 Way	R350074
1- $\frac{1}{4}$ S Pipe Corner 2 Way	R350075
1- $\frac{1}{4}$ S Pipe Corner 3 Way	R350076
1- $\frac{1}{4}$ S Pipe Corner 4 Way	R350077
1- $\frac{1}{4}$ S Pipe Corner 5 Way	R350078
1- $\frac{1}{4}$ S Pipe Corner 6 Way	R350079







6620 W. Arby Ave.  
Las Vegas, NV 89118  
(702) 631-4748 www.ihplabor.com

# Chain Hoist

## CHAIN MASTER CHAIN HOIST - 1 TON

Single Brake or Double Brake 1 Ton Hoist 3 Phase. Chain Motor rental price includes: two 5'; one 10'; one 20' (all measured Eye to Eye) 3/8" steel slings; one 3' STAC Chain; five 5/8" Shackles; two 3' Round Slings; two 6' Round Slings; 100' Fly Cable; Controller; Pendant; 100' Controller Power Cable.



DESCRIPTION	ITEM NO.
1 Ton Double Break 78' Chain 16 FPM	R150040
1 Ton Single Break 78' Chain 16 FPM (120lb.)	R150050
1 Ton Double Break 100' Lift 32 FPM	R150091
1/4 Ton 3 Phase 80' Lift Chain 20 FPM (50lb. with Bag and Chain)	R150001
1/4 Ton Double Reeve to 1/2 Ton 40' Lift Chain 10 FPM (50lb.)	R150100

## COLUMBUS MCKINNON CM CHAIN HOIST

Chain Motor rental price includes: two 5'; one 10'; one 20' (all measured Eye to Eye) 3/8" steel slings; one, 3' STAC Chain; five 5/8" Shackles; two 3' Round Slings; two 6' Round Slings; 100' Fly Cable; Controller; Pendant; 100' Controller Power Cable.

DESCRIPTION	ITEM NO.
1 Ton 75' Chain 16 FPM	R150070
1/2 Ton 40' Chain 16 FPM	R150020



# RIGGING

## Chain Hoist



6620 W. Arby Ave.  
Las Vegas, NV 89118  
(702) 631-4748 www.ihplabor.com

## RM SERIES II MANUAL CHAIN HOISTS



Available Capacity

$\frac{3}{4}$  TON TO 3 TON

RLP PREMIUM MANUAL  
LEVER PULLER

In-House Production stocks the Manual Lever Puller in the  $\frac{3}{4}$  Ton and 1-1/2 Ton capacity with multiple chain length.

We also stock the Chain Hoist in the 1 Ton, 2 Ton, and 3 Ton capacity.

Others sizes available by special order.



Available Capacity

1/2 Ton to 3 Ton

RM Series II Manual Chain Hoist meets or exceeds international standards, including ASME B30.16.

DESCRIPTION	Hook Travel	Chain Pull	ITEM NO.
1 Ton Hand Chain Hoist	40'	40'	R430110
1 Ton Hand Chain Hoist	10'	10'	R430120
2 Ton Hand Chain Hoist	10'	10'	R430130
3/4 Ton Lever Operated Hoist	10'		R430140
3/4 Ton Lever Operated Hoist	13'		R430150
3/4 Ton Lever Operated Hoist	16'		R430160
1-1/2 Ton Lever Operated Hoist	6'		R430170
2 Ton Maasdam Cable Puller	6'		R250300

## RATCHET LEVER HOIST (COME-A-LONG)

### MAASDAM POW'R-PULL

2 Ton Cable Puller

Model #: 144SB-6

Weight: 8.75lbs.

Cable Length: 12'.

Cable Lift: 6'.

Cable Diameter: 3/16".

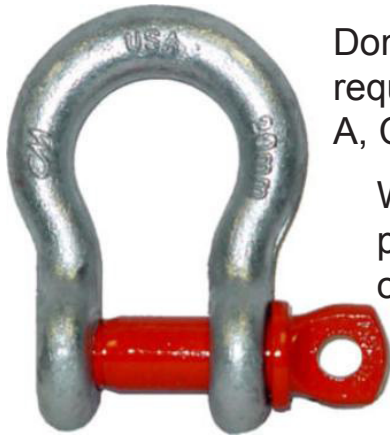
Leverage: 30:1





6620 W. Arby Ave.  
Las Vegas, NV 89118  
(702) 631-4748 www.ihplabor.com

# Rigging Hardware



Domestic Screw Pin Anchor Shackles meet the performance requirements of Federal Specification RR-C271D Type IVA, Grade A, Class 2.

Working load limit permanently shown on every Shackle.

## SCREW PIN ANCHOR SHACKLES

DESCRIPTION	Working Load Limit	ITEM NO.
1/4" Shackle	1,000 lb.	R440001
3/8" Shackle	2,000 lb.	R440030
1/2" Shackle	4,000 lb.	R440010
5/8" Shackle	6,500 lb.	R440050
3/4" Shackle	9,500 lb.	R440020

Other sizes available on request

## PEAR-FORGED CARBON STEEL RINGS

Pear Links are made of Carbon Steel, Quenched, Tempered, and Drop Forged. These weldless sling links are individually proof tested at 2 times working load limit.

DESCRIPTION	Working Load Limit	ITEM NO.
3/8 inch Forged Pear Ring	1,800lb.	R330010
1/2 inch Forged Pear Ring	2,900lb.	R330001
5/8 inch Forged Pear Ring	4,200lb.	R330020

Other sizes available on request.



## Warning

Improper use or care of all rigging equipment can result in bodily injury or property damage.

## SPECIAL THEATRICAL ALLOY CHAIN

CM Special Theatrical Alloy Chain (STAC) is used for theatrical rigging applications where an adjustable bridle is required. Made from heat treated alloy steel to provide long life, each link is proof tested to assure weld and material integrity. The 4:1 design factor meets NACM/GR80 standards for strength. Pieces are tagged with grade, reach, size and working load limit for positive easy identification. The link accepts shackles up to 3/4".

**WLL12,000lbs.**

DESCRIPTION	ITEM NO.
1/2" x 3' STAC Grade 80 w/Cert Tag	R430080
1/2" x 5' STAC Grade 80 w/Cert Tag	R430090

Other sizes available on request.





# Rigging

## I-Beam



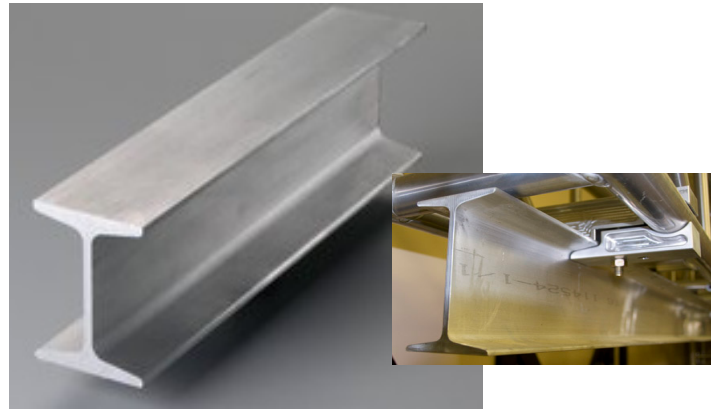
6620 W. Arby Ave.  
Las Vegas, NV 89118  
(702) 631-4748 www.ihplabor.com

## Aluminum American Standard I-Beam

ASTM B221-08 6061-T6

DESCRIPTION	ITEM NO.
5' Long 6" x 3"	R510240
10' Long 6" x 3"	R510230
15' Long 6" x 3"	R510220
25' Long 6" x 3"	R510210

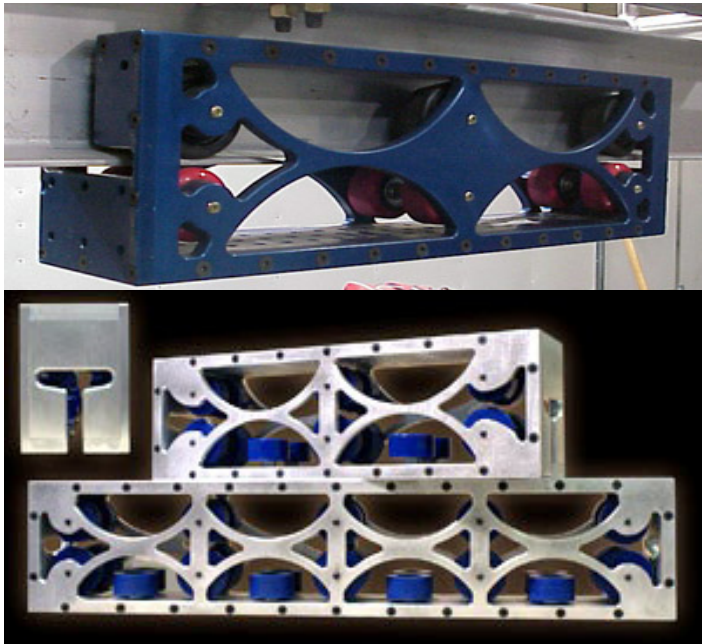
Other sizes available on request



## ALUMINUM I-BEAM TROLLEY

Our heavy-duty trolley system is built for 6" x 3" aluminum I-Beam. The trolley comes in 12", 24", and 36". Each trolley includes a mounting surface with dozens of grid-spaced 3/8" threaded holes. This allows the trolley to carry virtually anything.

DESCRIPTION	ITEM NO.
2' Long Aluminum Trolley	R430001
3' Long Aluminum Trolley	R430010



## STEEL HOIST TROLLEY



Simple, rugged, built for trouble-free service and ease of operations across a wide range of Steel I-Beam applications.

DESCRIPTION	ITEM NO.
1/2 Ton Steel Trolley	R430020
1 Ton Steel Trolley	R430030
2 Ton Steel Trolley	R430031



6620 W. Arby Ave.  
Las Vegas, NV 89118  
(702) 631-4748 www.ihplabor.com

# RIGGING

## Beam Clamps



This style Beam Clamp is used to attach to a standard I-Beam flange for overhead lifting and rigging applications. Adjustable to fit a wide range of flange widths. Built-in suspension bar for easy attachment to load. Steel construction, painted black. This style Beam I-Clamp is available in 4 Rated capacities.

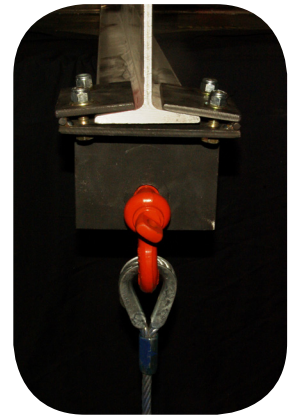


DESCRIPTION	ITEM NO.
1 Ton 2,000 lb. Load Rated	R160010
2 Ton 4,000 lb. Load Rated	R160020
3 Ton 6,000 lb. Load Rated	R160030
5 Ton 10,000 lb. Load Rated	R160035

## NEVADA I-BEAM CLAMP

The Nevada I-Beam Clamp attaches a shackle to a standard aluminum 6" x 3.33" I-Beam flange for overhead lifting and rigging applications. It can be used to hang I-Beam track from an overhead lifting point. →

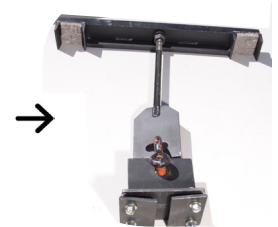
DESCRIPTION	ITEM NO.
Nevada I-Beam Clamp	R160030



## I-BEAM HANGER

This hanger attaches I-Beam Track and Trolley ("Aluminum American Standard I-Beam" on page 24) below Medium Duty 20.5" truss, safely transferring the weight carried on the I-Beam and Trolley to the top of the Truss. A threaded adjustment pulls the I-Beam tight to the Truss. →

DESCRIPTION	ITEM NO.
I-Beam Hanger	R160031



← This style Beam Clamp attaches Unistrut® steel framing to standard I-Beam flanges

DESCRIPTION	ITEM NO.
1-5/8" Channel Unistrut® to I-Beam Clamp	R540090
3-1/4" Channel Unistrut® to I-Beam Clamp	R540091

**Warning** Improper use or care of all rigging equipment can result in bodily injury or property damage.

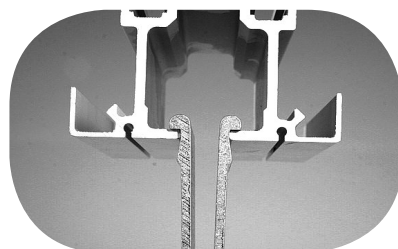
## MEGA-AIRWALL HANGERS



The Mega-Airwall Hanger will fit a wide variety of air wall tracks. The Mega Airwall Hanger engages

the airwall track for the full length of the hanger giving twice the length of metal to metal connection.

The Mega Airwall Hanger will also fit Unistrut® style channel.



The Mega Airwall Hanger 7" is 750 lb. load rated.  
The Mega Airwall Hanger 4" is 500 lb. load rated.

DESCRIPTION	ITEM NO.
Mega 7" Airwall Hanger, 750 lb. Load Rated	R160039
Mega 4" Airwall Hanger, 500 lb. Load Rated	R160038

## GENERAL AIRWALL HANGERS

A Forged Eye for installation in Airwall Track. The color code of green (correct) red (incorrect) instantly shows the installer that the track piece is correctly positioned. Fits certain Airwall Tracks.



DESCRIPTION	ITEM NO.
General Airwall Hanger	R160037





6620 W. Arby Ave.  
Las Vegas, NV 89118  
(702) 631-4748 www.ihplabor.com

# Rigging

## AIRCRAFT CABLE SLINGS



Slings are made with flemish eyes and heavy duty thimbles.  
Thimble Eyes will accept a 5/8" Shackle.  
Length is Eye to Eye.

### Load Ratings for 1/4" Cable

- Vertical Rating at 0.65 Ton
- Choke Rating at 0.48 Ton
- Basket Rating at 1.3 Ton

### Load Ratings for 3/8" Cable

- Vertical Rating at 1.4 Ton
- Choke Rating at 1.1 Ton
- Basket Rating at 2.9 Ton

DESCRIPTION	ITEM NO.
3/8" x 16" Steel Sling Dogbone	R120420
3/8" x 2' Steel Sling Dogbone	R120422
3/8" x 3' Steel Sling	R120424
3/8" x 5' Steel Sling	R120010
3/8" x 5' Steel Sling with Hose	R120429
3/8" x 8' Steel Sling	R120434
3/8" X 9' Steel Sling	R120436
3/8" x 10' Steel Sling	R120438
3/8" x 10' Steel Sling with Hose	R120439
3/8" x 15' Steel Sling	R120448
3/8" x 16' Steel Sling	R120450
3/8" x 17' Steel Sling	R120452
3/8" x 18' Steel Sling	R120454
3/8" x 20' Steel Sling	R120458
3/8" x 24' Steel Sling	R120460
3/8" x 30' Steel Sling	R120160
3/8" x 50' Steel Sling	R120516

DESCRIPTION	ITEM NO.
1/4" x 3' Steel Sling	R120226
1/4" x 5' Steel Sling	R120228
1/4" x 8' Steel Sling	R120034
1/4" x 9' Steel Sling	R120236
1/4" x 10' Steel Sling	R120238
1/4" x 15' Steel Sling	R120248
1/4" x 16' Steel Sling	R120250
1/4" x 17' Steel Sling	R120252
1/4" x 18' Steel Sling	R120254
1/4" x 19' Steel Sling	R120256
1/4" x 20' Steel Sling	R120258
1/4" x 30' Steel Sling	R120278



### Load Ratings for 1/2" Cable

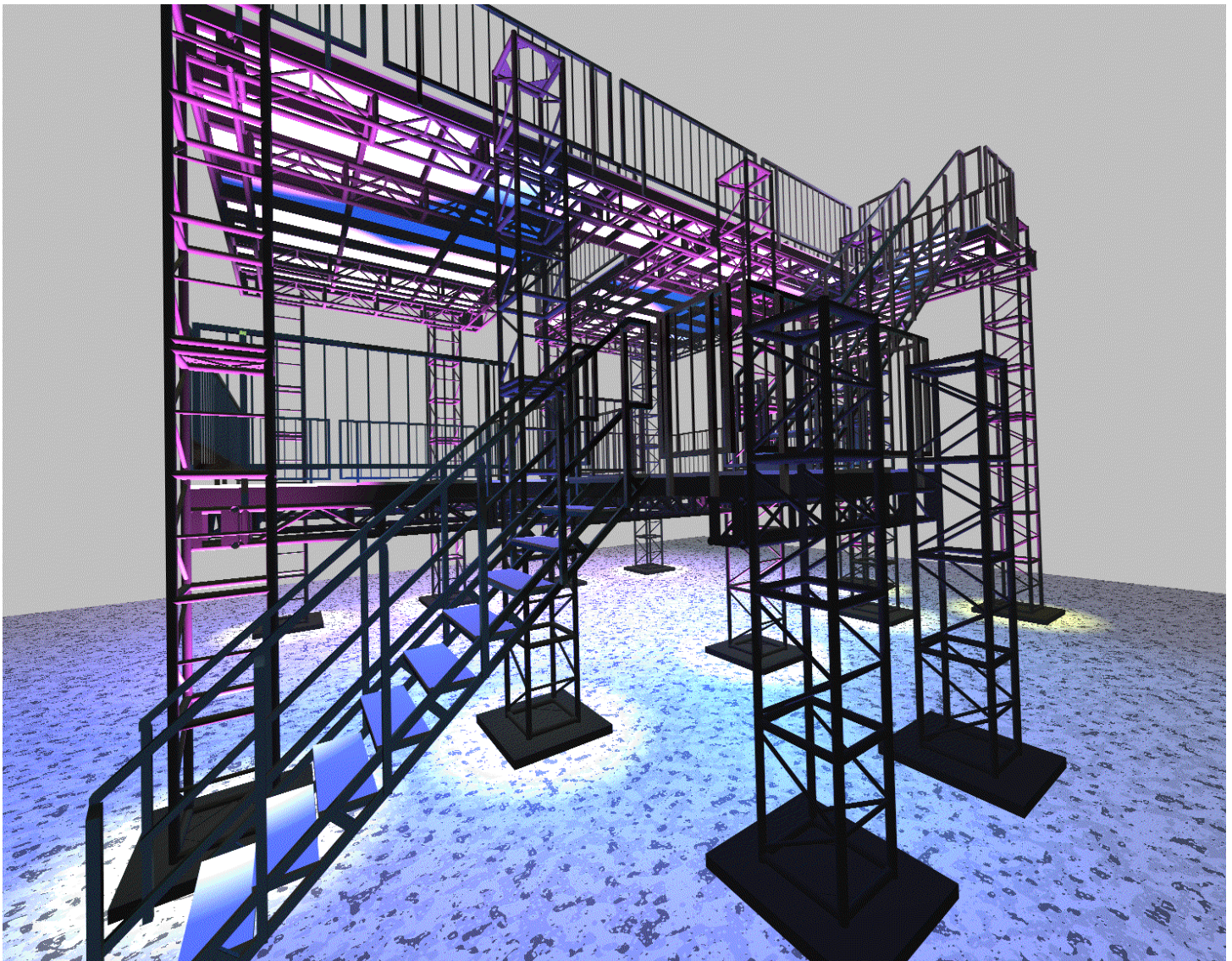
- Vertical Rating at 2.5 Ton
- Choke Rating at 1.9 Ton
- Basket Rating at 5.1 Ton

DESCRIPTION	ITEM NO.
1/2" x 2' Steel Sling Dog Bone	R120622
1/2" x 5' Steel Sling	R120628
1/2" x 10' Steel Sling	R120638
1/2" x 20' Steel Sling	R120658
1/2" x 30' Steel Sling	R120678

### **Warning**

**Improper use or care of any equipment, can result in bodily injury or property damage.**

# ***IDEAS!***



In-House Production, Truss and Platforms are like Tinker Toys to kids.  
What combination do you desire?





**BOOM-LIFT**



**FORKLIFT**

**IN-HOUSE  
PRODUCTION**  
Provides OSHA  
Compliance Lift Training



**SCISSOR-LIFT**

## **STAGEHAND LABOR SERVICES**

**In-House Production** can provide a total package for all your Stagehand staffing needs with Qualified Technicians in all of the categories in the **Entertainment, Convention, Film, TV, and Stage industries.**

**In-House Production's**  
NEW  
**Stagehand Time  
and Attendance  
Reporting System**  
(Aka: **"STARS"**)



Can accommodate your event labor with **Check-in, Check-Out, and Department Assignments** using our **automated process system.**

This system provides up-to the minute reports on your labor costs.



**"STARS"**

**"STARS"** also provides our clients, with real time printouts of the total labor hours, assignments and locations, assuring total accuracy.





# Rigging

## Slings



6620 W. Arby Ave.  
Las Vegas, NV 89118  
(702) 631-4748 www.ihplabor.com

## ROUND SLINGS

### POLYESTER ROUND SLINGS

A round sling is made up of nylon strands inside a polyester cover, that is capable of heavy weight loads. Their load capacity is about the same, but a Polyester Round Sling must usually be backed up with a wire safety due to fire code.



### GAC FLEX

A GAC Flex is made up of strands of galvanized aircraft cable inside a polyester cover that is capable of heavy weight loads. GAC Flex is almost identical to a Polyester Round Sling, except that a Polyester Round Sling uses nylon fiber, rather than aircraft cable. Since a GAC Flex is made from cable, it requires no safety backup.

- Vertical Rating at 5,300lb.
- Choke Rating at 4,200lb.
- Basket Rating at 10,600lb.

DESCRIPTION	ITEM NO.
1' Round Polyester Sling	R660019
2' Round Polyester Sling	R660020
3' Round Polyester Sling	R660021
4' Round Polyester Sling	R660022
6' Round Polyester Sling	R660024
8' Round Polyester Sling	R660026
9' Round Polyester Sling	R660027
12' Round Polyester Sling	R660030

DESCRIPTION	ITEM NO.
2' GAC Flex	R660000
3' GAC Flex	R660001
4' GAC Flex	R660005
6' GAC Flex	R660004
9' GAC Flex	R660007

### **Warning**

**Improper use or care of any equipment, can result in bodily injury or property damage. Do not exceed rated capacity.**

Round Sling covers come in colors for identification. Round Slings used in the entertainment industry are Black, but have the rating of a green Sling. The color rating code (as shown in the table below) is on the identifying tag instead of the polyester cover color.

Color	Inches	LBS/FT	Vertical	Choker	Basket
Purple	0.60	0.30	2,600	2,100	5,200
Green (Black)	0.80	0.40	5,300	4,200	10,600
Yellow	1.00	0.50	8,400	6,700	16,800
Tan	1.20	0.60	10,600	8,500	21,200
Red	1.30	0.80	13,200	10,600	16,400
White	1.40	0.90	16,800	13,200	33,600
Blue	1.55	1.20	21,200	16,400	42,400
Orange	1.75	1.50	25,000	21,200	50,000



6620 W. Arby Ave.  
Las Vegas, NV 89118  
(702) 631-4748 www.ihplabor.com

# Rigging

## Sheaves and Pulleys



SMC/Russ Anderson



Rescue Systems, Inc.



AMC Fabrication, Inc.

DESCRIPTION	ITEM NO.
SMC-Single Axle, Ball Bearing, Stainless Steel, Aluminum, 4" Sheave for 5/8" Rope	R120600
SMC-Single Axle, Ball Bearing, Stainless Steel, Aluminum, 2" Sheave for 5/8" Rope	R120610
CMI-Double Axle, Ball Bearing, Stainless Steel, Steel, 2" Sheave for 1/2" Rope	R120601
Block Division 03048-2, 2-1/2" Sheave, for 1/4" cable	R120602

Block Division, Inc.

CMI Corporation

CMI Corporation



# Electrical

## Cam-Lock Adapters



6620 W. Arby Ave.  
Las Vegas, NV 89118  
(702) 631-4748 www.ihplabor.com

### DOUBLE FEMALE CAM-LOCK ADAPTER

Female-Female, Multi-Way Connector,  
Double, 400 Amp Max.,  
16 Series Taper Nose, Commercial Grade,  
ECT Cam-Type Connector

Colors available

- Black,Red,Blue
- White,Green



DESCRIPTION	ITEM NO.
Green Female-Female Turnaround	R200090
White Female-Female Turnaround	R200091
Black Female-Female Turnaround	R200092
Red Female-Female Turnaround	R200093
Blue Female-Female Turnaround	R200094

### DOUBLE MALE CAM-LOCK ADAPTER

Male-Male, Multi-Way Connector, Double,  
400 Amp Max.,  
16 Series Taper Nose, Commercial Grade,  
ECT Cam-Type Connector

Colors available

- Black,Red,Blue
- White,Green



DESCRIPTION	ITEM NO.
Green Male-Male Turnaround	R200095
White Male-Male Turnaround	R200096
Black Male-Male Turnaround	R200097
Red Male-Male Turnaround	R200098
Blue Male-Male Turnaround	R200099

### TAPPING T CAM-LOCK ADAPTER

Male-Female-Female, Multi-Way  
Connector, Tapping Tee, 400 Amp Max.,  
16 Series Taper Nose, Commercial Grade,  
ECT Cam-Type Connector

Colors available

- Black,Red,Blue
- White,Green



DESCRIPTION	ITEM NO.
Green Double Female Splitter	R200100
White Double Female Splitter	R200101
Black Double Female Splitter	R200102
Red Double Female Splitter	R200103
Blue Double Female Splitter	R200104

### PARALLING T CAM-LOCK ADAPTER

Female-Male-Male, Multi-Way Connector,  
Tapping Tee, 400 Amp Max.,  
16 Series Taper Nose, Commercial Grade,  
ECT Cam-Type Connector

Colors available

- Black,Red,Blue
- White,Green



DESCRIPTION	ITEM NO.
Green Double Male Splitter	R200105
White Double Male Splitter	R200106
Black Double Male Splitter	R200107
Red Double Male Splitter	R200108
Blue Double Male Splitter	R200109





6620 W. Arby Ave.  
Las Vegas, NV 89118  
(702) 631-4748 www.ihplabor.com

# Electrical

## Power Distribution

### CAM-LOCK TO TAIL



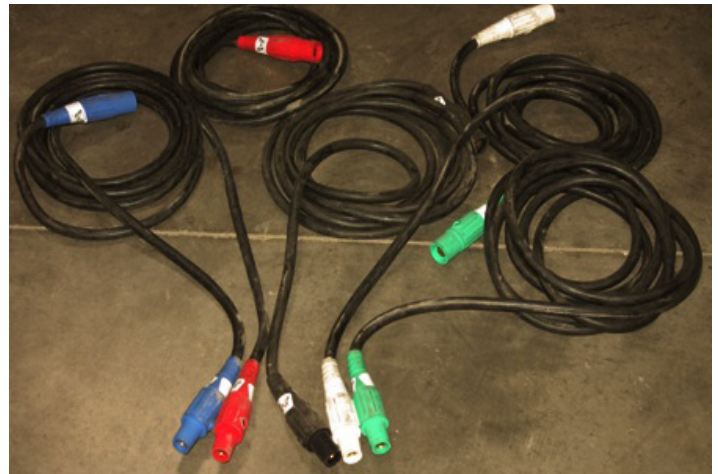
Standard 3 phase 4 wire (No Neutral) bare end to Cam-Lock Connectors.

DESCRIPTION	ITEM NO.
Bundle of Green, Black, Red, Blue, Bare end to Cam-Lock Connectors	R200175

### 50' 4/0 CAM-LOCK TO CAM-LOCK CABLE

Available as a kit or individually with standard color Cam-Lock Connectors. Also available in 25' or 100' lengths.

DESCRIPTION	ITEM NO.
50' Kit - Green, White, Black, Red, Blue	R200120
50' Green	R200150
50' White	R200160
50' Black	R200170
50' Red	R200140
50' Blue	R200130



## NUTECH INDUSTRIES, INC.

### TEMPORARY POWER DISTRIBUTION

The clear view panels are made of high impact, non-corrosive, non-conductive polycarbonate enclosures which are smaller in size and lighter in weight than older conventional panels.

DESCRIPTION	ITEM NO.
AV1 - MTR - IHP CONTROLLER, 9-20A 110V, 3 PER PHASE + PHASE CONNECTOR	R180200



# Electrical

## Power Distribution



6620 W. Arby Ave.  
Las Vegas, NV 89118  
(702) 631-4748 www.ihplabor.com



### 5 PIN HUBBELL

TEMPORARY POWER DISTRIBUTION  
A Hubbell 60 Amp HBL560P9W or 100 Amp HBL5100P9W connector to Cam-Lock connectors.

Overall length is approximately 5'.



DESCRIPTION	ITEM NO.
5 Pin Hubbell to Cam-Lock	R200202

### 4 PIN HODGE

TEMPORARY POWER DISTRIBUTION  
A Hubbell HBL560PS1W connector to Cam-Lock connectors.

Overall length is approximately 5'.



DESCRIPTION	ITEM NO.
4 Pin Hodge to Cam-Lock	R200180



Hubbell  
CS8364C CA Style

### 50 AMP TWOFER

TEMPORARY POWER DISTRIBUTION  
Two Hubbell CS8364C CA style receptacles to 1 Hubbell CS8365C locking plug. The overall length of the TwoFer is 3'.

R210260



DESCRIPTION	ITEM NO.
50 Amp Twofer	R200080





6620 W. Arby Ave.  
Las Vegas, NV 89118  
(702) 631-4748 www.ihplabor.com

# Electrical Cable

## FLY CABLE

Fly Cable connects between chain hoist and controller. In-House Production stocks lengths from 25' to 100' for both Chain Master and Columbus McKinnon configurations.



Fly Cable for Chain Master Hoists is a 14-4 cable with a Hubbell male connector HBL2421, and a Hubbell female connector HBL2423.

DESCRIPTION	ITEM NO.
25' CM Cable	R210039
50' CM Cable	R210040
75' CM Cable	R210050
100' CM Cable	R210060
25' MC Cable	R210070
50' MC Cable	R210080
75' MC Cable	R210090
100' MC Cable	R210100

Fly Cable for Columbus McKinnon Hoists is a Multi-pin (7pin "soco") and used on all CM Chain Hoists.

DESCRIPTION	ITEM NO.
10' CM/7 Pin Cable	R210001
25' CM/7 Pin Cable	R210002
50' CM/7 Pin Cable	R210003
75' CM/7 Pin Cable	R210004
100' CM/7 Pin Cable	R210005





# Electrical

## Controller Pendants



6620 W. Arby Ave.  
Las Vegas, NV 89118  
(702) 631-4748 www.ihplabor.com

### CHAIN HOIST MOTOR CONTROLLER PENDANT

Hand held Pendant for both CM and MC, with or without 50' Lead Cable, also Pendant 100' Extension.

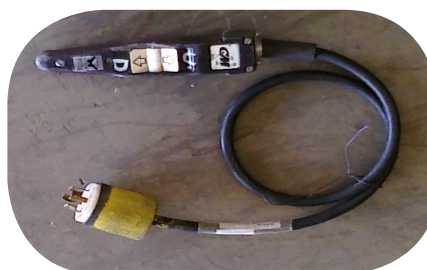


DESCRIPTION	ITEM NO.
16 Way CM Motor Control Pendant	R180011
8 Way CM Motor Control Pendant	R180052
4 Way CM Motor Control Pendant	R180012
8 Way ML Motor Control Pendant	R180130
100' CM Pendant Extension	R180033
50' CM Pendant Extension	R630001
100' ML Pendant Extension	R180034
CM Motor Pickles	R180060
MC Motor Pickles	R180066



Chain Master  
Pendant Extension  
R180033

CM Pickle R180060





6620 W. Arby Ave.  
Las Vegas, NV 89118  
(702) 631-4748 www.ihplabor.com

# Electrical

## Chain Motor Control

### Pelican Case Portable Hoist Controller

#### Specifications:

Three phase (208V) configuration  
Dual microprocessor design (main unit & hand held remote)  
Full magnetic circuit breaker protection  
From 4 to 32 hoists  
Power & phase indicators

#### Enclosure options:

Lightweight rolling Pelican case  
Suitcase style ATA case  
Rolling distro style ATA case

#### Remote features:

Individual "Bump" pushbuttons  
Processor independent E-stop system  
Red-Green direction LED indicators  
50' and 100' 6 pin XLR data cable standard

#### Connector options:

Multipin (7 pin "soco")



### Columbus McKinnon

DESCRIPTION	ITEM NO.
Columbus McKinnon Portable Controller	R180310



DESCRIPTION	ITEM NO.
8 Way CM Motor Control	R180020
4 Way CM Motor Control	R180140
8 Way ML Motor Control	R180130





# STAGING

## Platform/Legs/Wheels



6620 W. Arby Ave.  
Las Vegas, NV 89118  
(702) 631-4748 www.ihplabor.com

## STAGE-DECK PLATFORMS

Forkable Stage-Deck platforms are constructed using steel truss frame with high quality 3/4" Plyron tops. Standard deck can be used with 4 or 6 legs. Legs are made from 1-1/2" galvanized steel pipe. Decks are connected to each other by bolting through pre-drilled holes along each edge. Hand and Kick Rails are available.

DESCRIPTION	ITEM NO.
4' x 8' x 6" Deck	R370070
4' x 4' x 6" Deck	R370030
4' x 6' x 6" Deck	R370032
2' x 4' x 6" Deck	R370010
2' x 8' x 6" Deck	R370050
1' x 8' x 6" Deck	R370040
1' x 4' x 6" Deck	R370001
6' x 6' x 6" Deck	R370071



## STAGE-DECK LEGS

Galvanized Steel Leg with adjustable foot.

The listed height includes platform thickness. The adjustment range available for uneven floors is from 0 to 6" in height.



DESCRIPTION	ITEM NO.
6" High Leg	R360006
12" High Leg	R360012
14" High Leg	R360014
16" High Leg	R360016
20" High Leg	R360020
24" High Leg	R360024
30" High Leg	R360030
36" High Leg	R360036
48" High Leg	R360048
60" High Leg	R360060

## STAGE DECK CASTERS

These locking or non-locking 4" or 6" wheels replace platform legs to provide a rolling platform.

DESCRIPTION	ITEM NO.
Wheel Plate for Platform with 8" rise	R670023
Wheel Plate for Platform with 12" rise	R670023
Wheel Plate for Platform with 16" rise	R670023
Wheel Plate for Platform with 24" rise	R670023
Wheel Plate for Platform with 30" rise	R670023
Wheel Plate for Platform with 36" rise	R360211

In addition to our standard heights, custom heights are available. Offset and locking wheels are also available.







6620 W. Arby Ave.  
Las Vegas, NV 89118  
(702) 631-4748 www.ihplabor.com

# STAGING

Platform/Skirts/Rails

## PLATFORM SKIRTING

Black Pleated 8' or 4' wide.

Pleated skirting has Velcro™ to attach to platform and additional sections of skirting.



DESCRIPTION	ITEM NO.
4' Long Skirting Mounting Rail	R371900
4' Wide by 6" High	R371406
4' Wide by 12" High	R371412
4' Wide by 16" High	R371416
4' Wide by 2' High	R371424
4' Wide by 3' High	R371436
4' Wide by 4' High	R371448
4' Wide by 6' High	R371472
8' Wide by 6" High	R371806
8' Wide by 12" High	R371812
8' Wide by 16" High	R371816
8' Wide by 2' High	R371824
8' Wide by 3' High	R371836
8' Wide by 4' High	R371848
8' Wide by 6' High	R371872

## STAGE-DECK RAILINGS

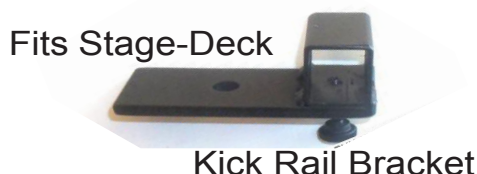
Deck rails bolt to platforms, ramps, and stairs, for both look, and safety. All rails are 41-1/2" high and meet all standards.

DESCRIPTION	ITEM NO.
8' Railing with 41.5" Vertical Bars	R360500
4' Railing with 41.5" Vertical Bars	R360520
3' Railing with 41.5" Vertical Bars	R360530
2' Railing with 41.5" Vertical Bars	R360540
8' Railing with 8' Horizontal Bars	R360510



## PLATFORM KICK RAILS

In-House Production custom built kick rail bracket is designed to use 1" square tubing. The brackets bolt to the open edge of our stage-decks. They also provide a chair stop and keep items from rolling off platforms when our decks are used for orchestra setups.



DESCRIPTION	ITEM NO.
8' Long 1" Square Tubing	R360550
4' Long 1" Square Tubing	R360560
2' Long 1" Square Tubing	R360570
Kick Rail Bracket	R360590

# STAGING

## Stairs/Steps/Jacks



6620 W. Arby Ave.  
Las Vegas, NV 89118  
(702) 631-4748 www.ihplabor.com

## STEEL FRAME STEPS

Single section stairs and railings for 4' high Stage-Deck platforms.

DESCRIPTION	ITEM NO.
5 Step 4' Rise	R370120



## WOOD PLATFORM STEPS



Hand Rails are available upon request

DESCRIPTION	ITEM NO.
1 Step 40" x 12"	R370080
2 Step 24" x 16"	R370085
3 Step 36" x 24"	R370090
4 Step 48" x 32"	R370100
4 Step 48" x 29"	R370099
8 Step 95.5" x 64", 3 piece Set	R370110

## SCAFFOLD LEVELING JACK

### Welded Base Plate

This leveling jack is made of all steel and has a 5" x 5" welded base plate. It is 24" tall with 18" of adjustment. The threaded shaft is 1-3/8" diameter.

Can be used with Stage-Deck Platform Legs to take the work out of leveling platforms, truss, or anything on uneven ground.

DESCRIPTION	ITEM NO.
Scaffold Leveling Jack	R250010





6620 W. Arby Ave.  
Las Vegas, NV 89118  
(702) 631-4748 www.ihplabor.com

# STAGING

## Dollies

### HEAVY DUTY DOLLY



3' x 4' with 8" wheels.  
These dollies are rated at 3,000 lb. capacity.

DESCRIPTION	ITEM NO.
Heavy Duty Dolly	R510173

### FURNITURE DOLLY

Carpeted surfaces protect finishes. 3" x 1" swivel caster and a heavy-duty hardwood frame can handle up to 500lb.

DESCRIPTION	ITEM NO.
Furniture Dolly	R600010



### FURNITURE DOLLY - DOLLY



Furniture Dolly - Dolly is designed to stack and keep track of Convention/Furniture Dollies. They hold up to 16 Dollies, keeping them organized and from falling over at show site or in your warehouse. Custom built dollies for sale or rent. Our color is Yellow. What is your Color?

DESCRIPTION	ITEM NO.
Furniture Dolly - Dolly	R600021



# STAGING

## Dollies



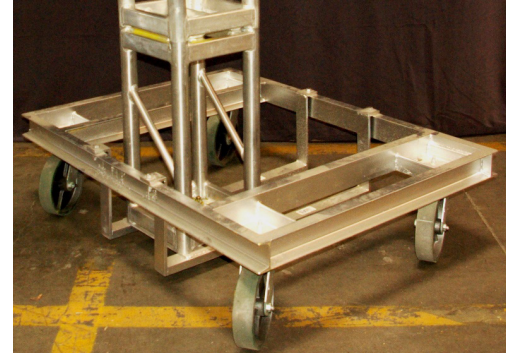
6620 W. Arby Ave.  
Las Vegas, NV 89118  
(702) 631-4748 www.ihplabor.com

## STAND UP TRUSS DOLLY

The Heavy Duty Steel Dolly with 8" wheels is adapted to bolt square 12" x 12", 20.5" x 20.5" truss.

Example: a large screen or backdrop, an arch, a goalpost, a light tree, or whatever you can imagine can be rolled into place and removed with ease.

These dolly's are rated at 3,000 lb.



DESCRIPTION	ITEM NO.
3' x 4' Dolly with Brackets for 12" x 12" Truss	R510174

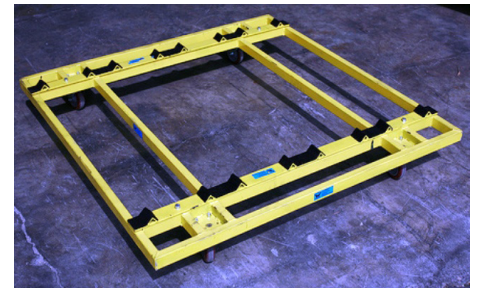
## TRUSS STACKERS AND DOLLY

4' x 4' Dolly provides non-slip transport of truss. The separator holds truss apart when stacking truss.

Separator can be used with 12" or 20.5" truss.

Dolly can also be used with or without transport truss separator.

Adding a 4' x 4' plywood top to this dolly, it can be used for product display and transport.



12" or 20.5" Truss Separator



Double Sided

DESCRIPTION	ITEM NO.
Dolly with Separator	R510170
12" x 12" Separator	R510171
20.5" x 20.5" Separator	R510172



6620 W. Arby Ave.  
Las Vegas, NV 89118  
(702) 631-4748 www.ihplabor.com

# STAGING Accessories

## WARDROBE RACK

### Z-Frame

This garment rack has a 5' Z-Frame base and 5' uprights. The load capacity is 350 lb, enough to hold a rack full of your heaviest garments. It comes with 4" professional grade, swivel casters with non-marring rubber wheels, and two wheel brakes for extra safety. The Z base is powder coated safety orange for a durable finish. The hang bar and uprights are chrome plated steel.

DESCRIPTION	ITEM NO.
Z-Frame Wardrobe Rack	R230001



## CHAIRS



Swirl backed, metal construction padded chair, in white, or black, for Artist use on stage.

White Metal Chair  
with white seat pad,  
with 4 lifting points  
to Fly Performer.

DESCRIPTION	ITEM NO.
White, Padded Swirl Back Cast Chair	R320610
Black, Padded, Swirl Back Cast Chair	R320611
White, Metal, Flying Chair	R320600



# STAGING

## Accessories



6620 W. Arby Ave.  
Las Vegas, NV 89118  
(702) 631-4748 www.ihplabor.com



## MANHASSET SYMPHONY MUSIC STAND

The Manhasset's Model No. 48, Symphony Music Stand desk is 20", wide by 12-1/2" high with a 2-1/4" lip. The height of this music stand varies infinitely from 26" to 48" (lip to floor), with a maximum overall height of 60-1/2".

DESCRIPTION	ITEM NO.
Music Stand M#48	R320010

## SAND BAGS

Approximate weight 30lb.

In House Production Sand Bags are made from black canvas, measuring 16" x 15". These double pocket bags with a handle can be used wherever additional weight is required to prevent tipping or rolling of stage equipment.

DESCRIPTION	ITEM NO.
Sand Bags	R320101

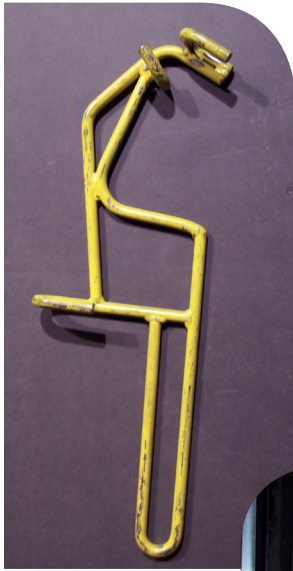






6620 W. Arby Ave.  
Las Vegas, NV 89118  
(702) 631-4748 www.ihplabor.com

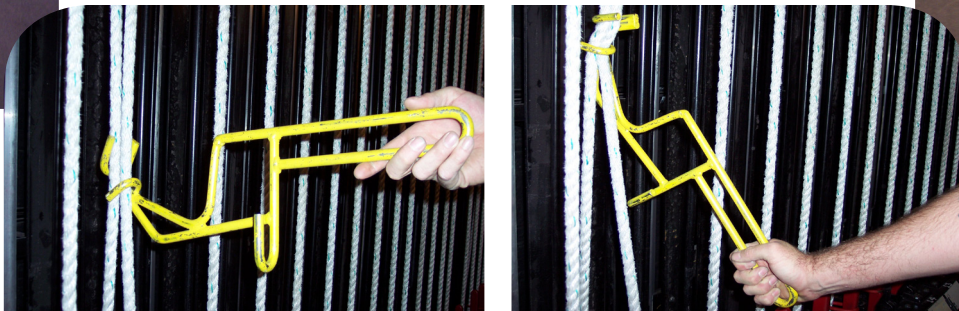
# STAGING TOOLS



## Rope Lock

A simple, safe tool to replace the “snub knot” and be sure the arbor and pipe do not move while loading or unloading the counter weight. Like a “snub knot, this tool can be used to control movement with an imbalance. The maximum imbalance must not exceed 75lb.

DESCRIPTION	ITEM NO.
Rope Lock, Left Hand	R160250L
Rope Lock, Right Hand	R160250R



Available in both left or right hand versions.



## Cross Grid Connector

Provides a rigid low profile connection for assembling pipe grids of 1-1/2" schedule 40 pipe. Pipes can be added or removed in place, without sliding them in from the ends. Half of the assembly can also be used to secure a 1-1/2" schedule 40 pipe to any flat surface.

DESCRIPTION	ITEM NO.
Cross Grid Connector	R160202

## Batten Clamp

Provides a secure connection to Batten pipes when suspended from a working or static grid.

DESCRIPTION	ITEM NO.
Batton Clamp 1-1/2"	R160270
Batton Clamp 2"	R160271



## Grid Pipe/Spreader Pipe

Simple tool to hang a heavy load from a steel theater grid. This 4" x 4' pipe spans the grid steel allowing a Round or Cable Sling to hang between grid slats and distributes weight to the grid without risk of chafing or cutting the Round or Cable Sling.

DESCRIPTION	ITEM NO.
Grid Pipe/Spreader Pipe	R160280

# DISPLAY SYSTEMS

## Pipe & Drape



6620 W. Arby Ave.  
Las Vegas, NV 89118  
(702) 631-4748 www.ihlabor.com

### Exhibit Booth Pole and Drape

In-House Production has your exhibit booth needs with our selection of Pole and Drape components. We stock black 4' x 8', 10', or 12' Banjo Cloth - Flame Resistant (this material is widely used in the trade show industry, has a woven texture surface and a shine to it.) This material is also available in yellow.

Standard uprights available from stock are 12' and two piece adjustable from 12' to 16'.

DESCRIPTION	ITEM NO.
Telescopic Drape Support 8'-14'	R340040
Telescopic Drape Support 6'-10'	R340041
Adjustable Upright 8' - 14'	R340050
Adjustable Upright 6' - 10'	R340051
Standard Base Plate	R340065
18" x 18" Base Plate w/2"x6" w/Pin	R340060
P&D Black 8' x 4' Banjo Cloth	R340030
P&D Blue 12' x 4.5' Commando	R340090
P&D Black Duvetyn 12' x 4.5'	R340070

Adjustable Upright

2 PIECE MODELS

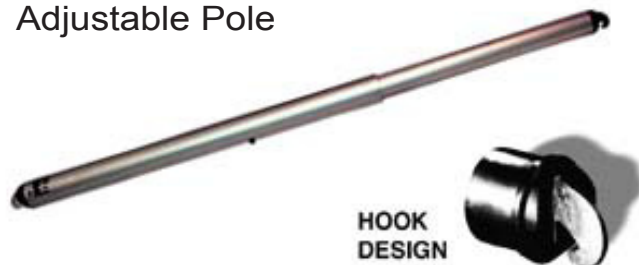
1-5/8" Tube

3 PIECE MODELS

1-13/16" Tube

2" Tube requires 2" diameter pin

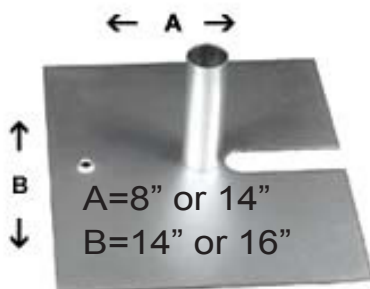
Adjustable Pole



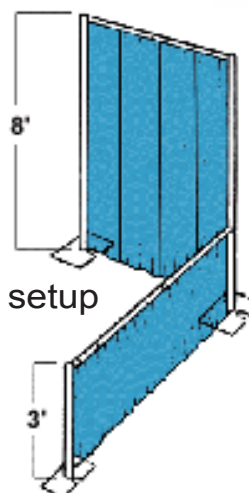
HOOK DESIGN

Deep hook design minimizes accidental removal from uprights. Low profile will not snag drapes during installation or removal.

Stacking Base Plate



Sample Booth setup



24"x 24" Base Plate

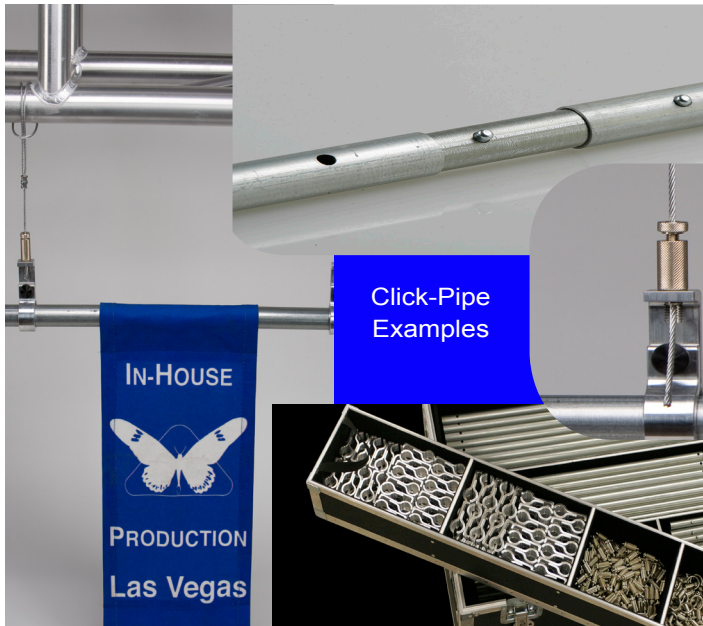


6620 W. Arby Ave.  
Las Vegas, NV 89118  
(702) 631-4748 www.ihplabor.com

# DISPLAY SYSTEMS

Clic-Pipe

## CLIC-PIPE ALL-IN-ONE KITS



Click-Pipe  
Examples

IMAGINE  
all the possibilities with  
CLIC-PIPE!

DESCRIPTION	ITEM NO.
300 Piece CLIC-PIPE Kit	R170143

Individual components are for sale

### Applications

- Match pipe length to banner when hanging banners
- Save time over threaded connections
- Quickly snap together bottom pipe length to fit drops
- Quick booth frames
- Custom projection screen frames
- Create quick change room

### Click-Pipe

Is constructed from 1" OD 16 Gauge Steel Mechanical Tubing and is drilled to accept the locking pin of 10" long insert.

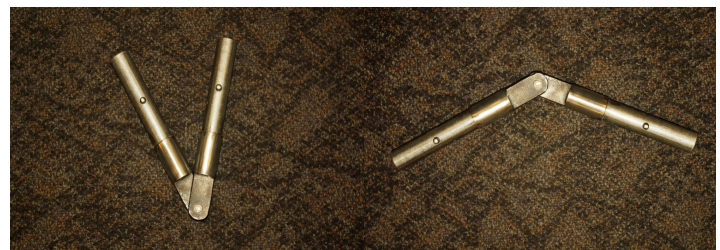
Click-Pipe is available in standard lengths: 6"; 1'; 2'; 3'; 4'; 5'; and 10'; All other lengths are custom made.



\* For Sale or Rent \*

IMAGINE  
all that you can do with  
CLIC-PIPE!

### Nunchucks



22.5 Maximum Degree Adjustable Angles  
Specialty designed and constructed hinged fittings allow your designer the ability to hang or construct rigid frames and angled pipe for your banners, drapery, signs or screens.



# Specialty Rigging

## Banner, Drape, and Screen



6620 W. Arby Ave.  
Las Vegas, NV 89118  
(702) 631-4748 www.ihplabor.com



### Pro-Banner Clamp

For 1" Click-Pipe or EMT, threaded for 1/4"-20 and a **Heavier Version** threaded for 3/8"-16. The working load limit for this clamp is 350 lb. The actual load limit is based on the attachments WLL.

Aluminum 3/8"-16 R160130  
Aluminum 1/4"-20 R160100



### Pro-Safety Clamp

For Hanging Click-Pipe using Quick Links, Cable Loops, Carabiner, etc. WLL - 75 lbs. Available in both aluminum and black finish.

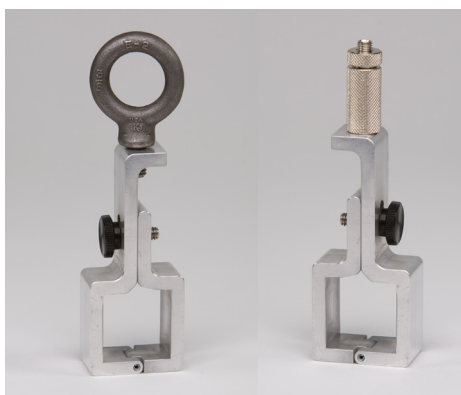


Aluminum R160290  
Black R160300

### Pro-Pipe or Truss To Telerod

Used to hang pocketed drape with telerod (pipe and drape) to 1-1/2" stage batten pipe (1-1/2" schedule 40 black steel pipe) or aluminum truss. Available in both aluminum and black finish.

Aluminum R160310  
Black R160320



1" R160060 1" R160050  
1-1/4" R160090 1-1/4" R160080

### Pro-Screen Clamps (2 Models)

For 1" and 1-1/4" Fast-Fold Screen hanging applications, also fits steel or aluminum square tubing of the same sizes. The clamps are threaded for 3/8"-16 external threads and are also sold with our Pro-Grip for 1/8" aircraft cable with full up and down adjustment.

Can also be used with a Forged Eye.



1" R160040  
1-1/4" R160070



6620 W. Arby Ave.  
Las Vegas, NV 89118  
(702) 631-4748 www.ihplabor.com

# Griplock® System Pro-Lock/Pro-Grip

1/8" Pro-Lock



## Pro-Lock / Pro-Grip Cable Grippers

In-House Production stocks the Pro-Lock and Pro-Grip for both **Sale** and **Rental**. These devices permit unlimited adjustment in height. Type 15 for 1/16" cable, Type 30 for 1/8" cable, Type 50 for 3/16" cable, and Type 80 for 1/4" cable.

3/16" Pro-Lock



1/4" Pro-Lock



1/16" Pro-Lock



1/4" Pro-Lock



## Pro-Grip Cable Grippers

Use the same Wire Sizes as Pro-Locks and attach to Snap Rings, Forks, Screen Clamps, Banner Clamps. Their use is limited to the rating of the wire/grip/clamp combination.

1/8" Pro-Grip



1/16" Pro-Grip



1/8" Snap Hook



1/4" Pro-Grip w/Fork



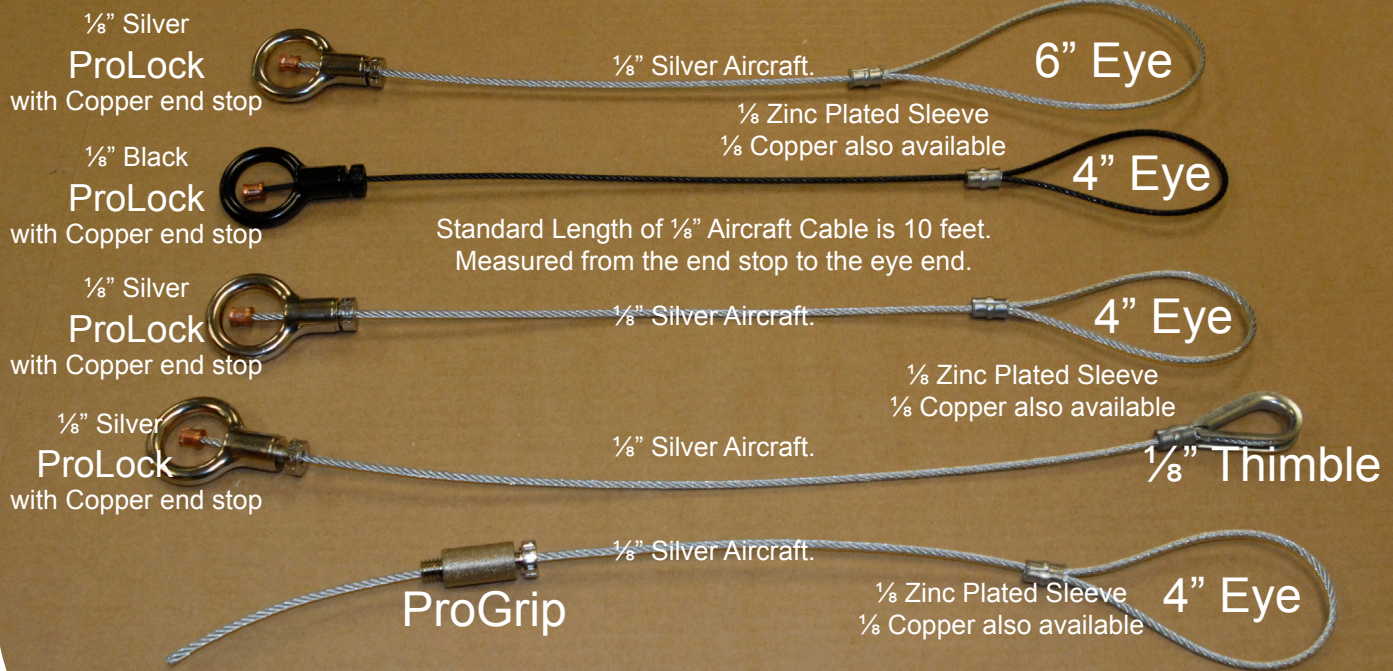
CABLE SIZE 7*9 or 7*19	DESCRIPTION	Type	WWL 1:5 RATIO	ITEM NO.
1/8"	Pro-Lock	30-RI-V6B-S (Black)	225 lb.	R410020
1/8"	Pro-Lock	30-RI-V6-S (Silver)	225 lb.	R410030
1/8"	Pro-Grip	30-3816e-V6-S	225 lb.	R420010
1/16"	Pro-Lock	15-RI-S	60 lb.	R410060
1/16"	Pro-Grip	15-1420-S	60 lb.	R420001
3/16"	Pro-Lock	50-R1-V6B (Black)	500 lb.	R410070
3/16"	Pro-Lock	50-RI-V3 (Silver)	500 lb.	R410050
3/16"	Pro-Grip	50-M12e-V3 (Silver)	500 lb.	R420040
3/16"	Pro-Grip	50-M12e-V6B (Black)	500 lb.	R420050
1/4"	Pro-Lock	80-RI-V6B (Black)	700 lb.	R410111
1/4"	Pro-Grip	80-M20e-V6B (Black)	700 lb.	R420070

Not all available item numbers are shown.



## Cable Assemblies

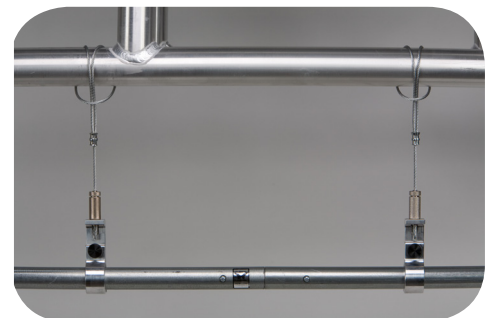
### ProGrip & ProLocks are Adjustable Cable Grippers.



1/8" Aircraft Cable is available in silver or black.

## Cable Assemblies Sizing

- Standard Length - Measured from End of Eye to Copper End Stop - 10 Feet.
- Custom Cable Lengths - Charged in One Foot Increments, including Eye.
- Standard Eye Size - 4 inches, 6 inches.
- Aircraft Cable Sizes - 1/16, 1/8, 3/16, 1/4 inch.
- All Aircraft Cable Sizes is available in Silver and Black.







6620 W. Arby Ave.  
Las Vegas, NV 89118  
(702) 631-4748 www.ihplabor.com

# CUSTOM FABRICATION

## HEAVY DUTY STACKABLE STORAGE

Heavy Duty Stackable Storage bins available in stock sizes or custom sizes on request. We use these to store our rigging hardware. Store your rigging, sandbags, electrical or whatever parts you may need to store. These bins have clearance to permit forklift or pallet Jack Handling.

Heavy Duty Stackable Storage Bins are made from 1-1/2" x 1-1/2" x .065" tubes with wire mesh welded to sides. Front is lowered for ease of access into bin.



At your next party, you want a **LARGE VIDEO SCREEN** above the crowd. In-House Production has the equipment and expertise to hang a Video Wall anywhere!



In-House Production has the equipment and expertise to provide staging and ground support systems. We provide the rigging and staging, you provide the "Talent".







6620 W. Arby Ave.  
Las Vegas, NV 89118  
(702) 631-4748 [www.ihplabor.com](http://www.ihplabor.com)

# IMAGINEERING



In-House Production Shop/Warehouse











6620 W. Arby Ave.  
Las Vegas, NV 89118  
(702) 631-4748 [www.ihplabor.com](http://www.ihplabor.com)

# IMAGING ENGINEERING



Our Tinker Toys for Rent.  
We can provide the Staff also.



# IN-HOUSE PRODUCTION



Call us for your  
**Stage Labor, Payroll Support,  
Rental Supply**

Phone (702) 631-4748, Toll Free (888) 631-4748

[www.ihplabor.com](http://www.ihplabor.com)

6620 W Arby Ave, Las Vegas, NV 89118